

## CAF-1 p60 Polyclonal Antibody

|                     |  |
|---------------------|--|
| Catalog_no :        | AT0605   |
| Applications :      | WB,IHC-p,IF,ELISA  |
| Reactivity :        | Human,Mouse,Rat  |
| Category :          | 抗原抗体   |
| Size :              | 100µg/50µg/20µg  |
| Gene_name :         | CHAF1B   |
| Protein_name :      | Chromatin assembly factor 1 subunit B  |
| Humangene_id :      | <a href="#">8208</a>   |
| Humanswissprot_no : | <a href="#">Q13112</a>   |
| Mousegene_id :      | <a href="#">110749</a>   |
| Mouseswissprot_no : | <a href="#">Q9D0N7</a>   |
| Immunogen :         | The antiserum was produced against synthesized peptide derived from human CAF1B. AA range:71-120   |
| Specificity :       | CAF-1 p60 Polyclonal Antibody detects endogenous levels of CAF-1 p60 protein.  |
| Formulation :       | Liquid in PBS containing 50% glycerol, 0.5% BSA and 0.02% sodium azide.  |
| Source :            | Rabbit   |
| Dilution :          | Western Blot: 1/500 - 1/2000. Immunohistochemistry: 1/100 - 1/300. Immunofluorescence: 1/200 - 1/1000. ELISA: 1/20000. Not yet tested in other applications.                                       |
| Purification :      | The antibody was affinity-purified from rabbit antiserum by affinity-chromatography using epitope-specific immunogen.  |
| Concentration :     | 1 mg/ml  |
| Storage_stability : | -20°C/1 year   |
| Msds :              | MSDS_Antibody.pdf  |
| Other_name :        | CHAF1B; CAF1A; CAF1P60; MPHOSPH7; MPP7; Chromatin assembly factor 1 subunit B; CAF-1 subunit B; Chromatin assembly factor I p60 subunit; CAF-I 60 kDa subunit; CAF-I p60; M-phase phosphoprotein 7 |

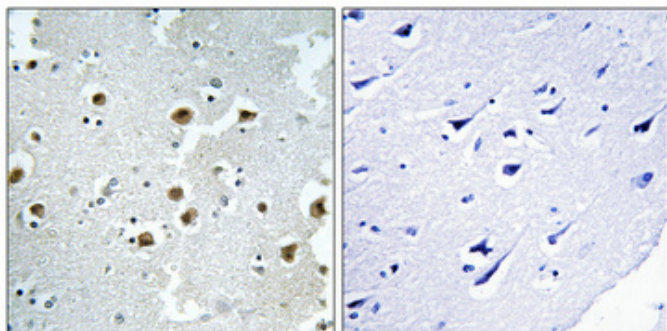


Molecular  
Weight :

61KD

---

## Product Images



Immunohistochemical analysis of paraffin-embedded Human brain. Antibody was diluted at 1:100(4°,overnight). High-pressure and temperature Tris-EDTA,pH8.0 was used for antigen retrieval. Negative contrl (right) obtaned from antibody was pre-absorbed by immunogen peptide.