



## Calmodulin Polyclonal Antibody

Catalog_no :	AT0612
Applications :	WB,IHC-p,IF,ELISA
Reactivity :	Human,Mouse,Rat
Category :	抗原抗体
Size :	100µg/50µg/20µg
Gene_name :	CALM1
Protein_name :	Calmodulin
Humangene_id :	<a href="#">801/805/808</a>
Humanswissprot_no :	<a href="#">P62158</a>
Mousegene_id :	<a href="#">12313</a>
Mouseswissprot_no :	<a href="#">P62204</a>
Ratgene_id :	<a href="#">24242</a>
Ratswissprot_no :	<a href="#">P62161</a>
Immunogen :	The antiserum was produced against synthesized peptide derived from human Calmodulin. AA range:46-95
Specificity :	Calmodulin Polyclonal Antibody detects endogenous levels of Calmodulin protein.
Formulation :	Liquid in PBS containing 50% glycerol, 0.5% BSA and 0.02% sodium azide.
Source :	Rabbit
Dilution :	Western Blot: 1/500 - 1/2000. Immunohistochemistry: 1/100 - 1/300. Immunofluorescence: 1/200 - 1/1000. ELISA: 1/10000. Not yet tested in other applications.
Purification :	The antibody was affinity-purified from rabbit antiserum by affinity-chromatography using epitope-specific immunogen.
Concentration :	1 mg/ml
Storage_stability :	-20°C/1 year

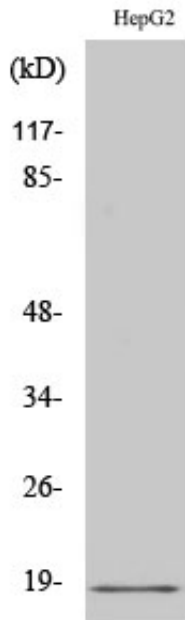
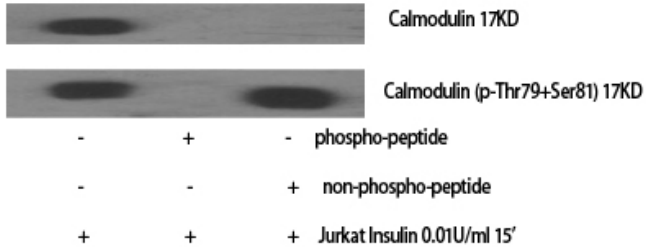


MsdS : [MSDS\\_Antibody.pdf](#)

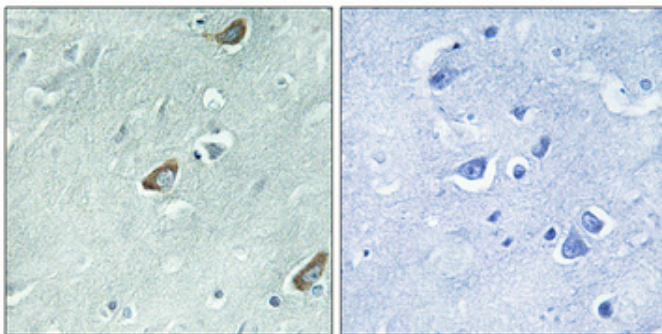
Other\_name : CALM1; CALM; CAM; CAM1; CALM2; CAM2; CAMB; CALM3; CALML2; CAM3; CAMC;  
CAMIII; Calmodulin; CaM

## Product Images

Western Blot analysis of various cells using Calmodulin Polyclonal Antibody diluted at 1 : 2000



Western Blot analysis of HuvEc cells using Calmodulin Polyclonal Antibody diluted at 1 : 2000



Immunohistochemical analysis of paraffin-embedded Human brain. Antibody was diluted at 1:100(4°,overnight). High-pressure and temperature Tris-EDTA,pH8.0 was used for antigen retrieval. Negative contrl (right) obtaned from antibody was pre-absorbed by immunogen peptide.

Immunohistochemical analysis of paraffin-embedded Human breast cancer. Antibody was diluted at 1:100(4°,overnight). High-pressure and temperature Tris-EDTA,pH8.0 was used for antigen retrieval. Negative contrl (right) obtaned from antibody was pre-absorbed by immunogen peptide.

