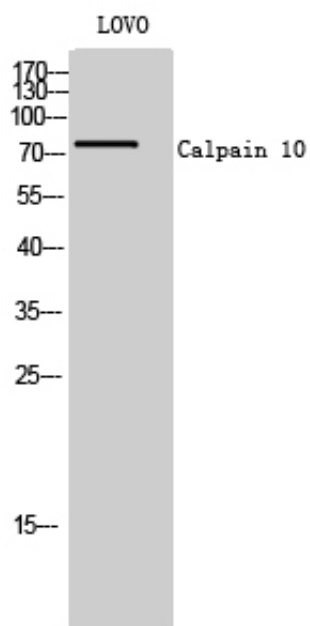




## Calpain 10 Polyclonal Antibody

Catalog_no :	AT0614
Applications :	WB,ELISA
Reactivity :	Human
Category :	抗原抗体
Size :	100µg/50µg/20µg
Gene_name :	CAPN10
Protein_name :	Calpain-10
Humangene_id :	<a href="#">11132</a>
Humanswissprot_no :	<a href="#">Q9HC96</a>
Immunogen :	Synthesized peptide derived from the N-terminal region of human Calpain 10.
Specificity :	Calpain 10 Polyclonal Antibody detects endogenous levels of Calpain 10 protein.
Formulation :	Liquid in PBS containing 50% glycerol, 0.5% BSA and 0.02% sodium azide.
Source :	Rabbit
Dilution :	Western Blot: 1/500 - 1/2000. ELISA: 1/40000. Not yet tested in other applications.
Purification :	The antibody was affinity-purified from rabbit antiserum by affinity-chromatography using epitope-specific immunogen.
Concentration :	1 mg/ml
Storage_stability :	-20°C/1 year
Msds :	<a href="#">MSDS_Antibody.pdf</a>
Other_name :	CAPN10; KIAA1845; Calpain-10; Calcium-activated neutral proteinase 10; CANP 10
Molecular Weight :	75KD

## Product Images



Western Blot analysis of LOVO cells using Calpain 10 Polyclonal Antibody