

CaMKK2 Polyclonal Antibody

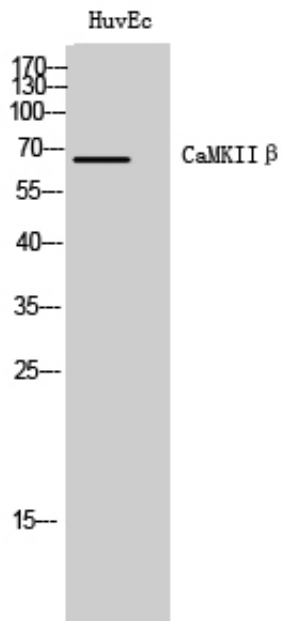
Catalog_no :	AT0624
Applications :	WB,IHC-p,ELISA
Reactivity :	Human,Mouse,Rat
Category :	抗原抗体
Size :	100µg/50µg/20µg
Gene_name :	CAMKK2
Protein_name :	Calcium/calmodulin-dependent protein kinase kinase 2
Humangene_id :	10645
Humanswissprot_no :	Q96RR4
Mousegene_id :	207565
Mouseswissprot_no :	Q8C078
Ratgene_id :	83506
Ratswissprot_no :	O88831
Immunogen :	The antiserum was produced against synthesized peptide derived from human CAMKK2. AA range:381-430
Specificity :	CaMKIIβ Polyclonal Antibody detects endogenous levels of CaMKIIβ protein.
Formulation :	Liquid in PBS containing 50% glycerol, 0.5% BSA and 0.02% sodium azide.
Source :	Rabbit
Dilution :	Western Blot: 1/500 - 1/2000. Immunohistochemistry: 1/100 - 1/300. ELISA: 1/10000. Not yet tested in other applications.
Purification :	The antibody was affinity-purified from rabbit antiserum by affinity-chromatography using epitope-specific immunogen.
Concentration :	1 mg/ml
Storage_stability :	-20°C/1 year
Msds :	MSDS_Antibody.pdf



Other_name : CAMKK2; CAMKKB; KIAA0787; Calcium/calmodulin-dependent protein kinase kinase 2; CaM-KK 2; CaM-kinase kinase 2; CaMKK 2; Calcium/calmodulin-dependent protein kinase kinase beta; CaM-KK beta; CaM-kinase kinase beta; CaMKK beta

Molecular Weight : 65KD

Product Images



Western Blot analysis of HuvEc cells using CaMKII β Polyclonal Antibody