

CaMKII β/γ Polyclonal Antibody

Catalog_no :	<u>AT0625</u>
Applications :	<u>WB,IF,ELISA</u>
Reactivity :	<u>Human,Mouse,Rat</u>
Category :	<u>抗原抗体</u>
Size :	<u>100μg/50μg/20μg</u>
Gene_name :	<u>CAMK2B/CAMK2G</u>
Protein_name :	<u>Calcium/calmodulin-dependent protein kinase type II subunit beta/gamma</u>
Humangene_id :	<u>818/816</u>
Humanswissprot_no :	<u>Q13555/Q13554</u>
Mousegene_id :	<u>12325/12323</u>
Ratgene_id :	<u>171140/24245</u>
Ratswissprot_no :	<u>P11730/P08413</u>
Immunogen :	<u>The antiserum was produced against synthesized peptide derived from human CaMK2 beta/gamma. AA range:509-558</u>
Specificity :	<u>CaMKIIβ/γ Polyclonal Antibody detects endogenous levels of CaMKIIβ/γ protein.</u>
Formulation :	<u>Liquid in PBS containing 50% glycerol, 0.5% BSA and 0.02% sodium azide.</u>
Source :	<u>Rabbit</u>
Dilution :	<u>Western Blot: 1/500 - 1/2000. Immunofluorescence: 1/200 - 1/1000. ELISA: 1/20000. Not yet tested in other applications.</u>
Purification :	<u>The antibody was affinity-purified from rabbit antiserum by affinity-chromatography using epitope-specific immunogen.</u>
Concentration :	<u>1 mg/ml</u>
Storage_stability :	<u>-20°C/1 year</u>
Msds :	<u>MSDS_Antibody.pdf</u>
Other_name :	<u>CAMK2G; CAMK; CAMK-II; CAMKG; Calcium/calmodulin-dependent protein kinase type II subunit gamma; CaM kinase II subunit gamma; CaMK-II subunit gamma; CAMK2B;</u>

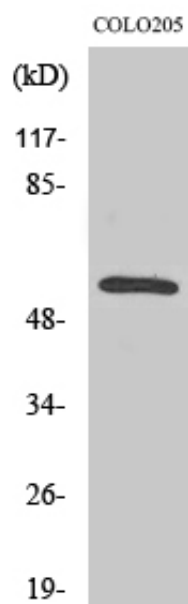


CAM2; CAMK2; CAMKB; Calcium/calmodulin-dependent protein kinase type II subunit
bet

Molecular
Weight :

62KD

Product Images



Western Blot analysis of various cells using CaMKII β / γ Polyclonal Antibody