

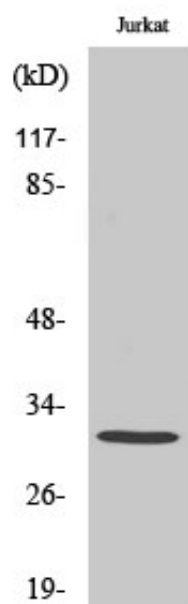
Carbonyl Reductase 3 Polyclonal Antibody

Catalog_no :	AT0633
Applications :	WB,IHC-p,ELISA
Reactivity :	Human,Mouse,Rat
Category :	抗原抗体
Size :	100µg/50µg/20µg
Gene_name :	CBR3
Protein_name :	Carbonyl reductase [NADPH] 3
Humangene_id :	874
Humanswissprot_no :	O75828
Mousegene_id :	109857
Mouseswissprot_no :	Q8K354
Immunogen :	The antiserum was produced against synthesized peptide derived from human CBR3. AA range:151-200
Specificity :	Carbonyl Reductase 3 Polyclonal Antibody detects endogenous levels of Carbonyl Reductase 3 protein.
Formulation :	Liquid in PBS containing 50% glycerol, 0.5% BSA and 0.02% sodium azide.
Source :	Rabbit
Dilution :	Western Blot: 1/500 - 1/2000. Immunohistochemistry: 1/100 - 1/300. ELISA: 1/40000. Not yet tested in other applications.
Purification :	The antibody was affinity-purified from rabbit antiserum by affinity-chromatography using epitope-specific immunogen.
Concentration :	1 mg/ml
Storage_stability :	-20°C/1 year
Msds :	MSDS_Antibody.pdf
Other_name :	CBR3; Carbonyl reductase [NADPH] 3; NADPH-dependent carbonyl reductase 3
Molecular	31KD



Weight :

Product Images



Western Blot analysis of various cells using Carbonyl Reductase 3 Polyclonal Antibody