

CARP Polyclonal Antibody

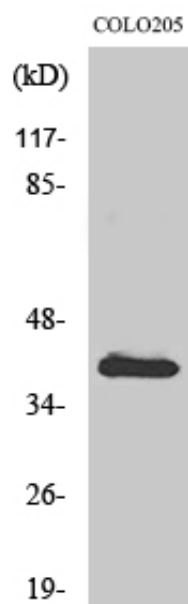
Catalog_no :	AT0640
Applications :	WB,IHC-p,ELISA
Reactivity :	Human,Mouse,Rat
Category :	抗原抗体
Size :	100µg/50µg/20µg
Gene_name :	ANKRD1
Protein_name :	Ankyrin repeat domain-containing protein 1
Humangene_id :	27063
Humanswissprot_no :	Q15327
Mousegene_id :	107765
Mouseswissprot_no :	Q9CR42
Ratgene_id :	27064
Ratswissprot_no :	Q8R560
Immunogen :	The antiserum was produced against synthesized peptide derived from human ANKRD1. AA range:231-280
Specificity :	CARP Polyclonal Antibody detects endogenous levels of CARP protein.
Formulation :	Liquid in PBS containing 50% glycerol, 0.5% BSA and 0.02% sodium azide.
Source :	Rabbit
Dilution :	Western Blot: 1/500 - 1/2000. Immunohistochemistry: 1/100 - 1/300. ELISA: 1/20000. Not yet tested in other applications.
Purification :	The antibody was affinity-purified from rabbit antiserum by affinity-chromatography using epitope-specific immunogen.
Concentration :	1 mg/ml
Storage_stability :	-20°C/1 year
Msds :	MSDS_Antibody.pdf



Other_name : ANKRD1; C193; CARP; HA1A2; Ankyrin repeat domain-containing protein 1; Cardiac ankyrin repeat protein; Cytokine-inducible gene C-193 protein; Cytokine-inducible nuclear protein

Molecular Weight : 36KD

Product Images



Western Blot analysis of various cells using CARP Polyclonal Antibody