

Casein Kinase I δ Polyclonal Antibody

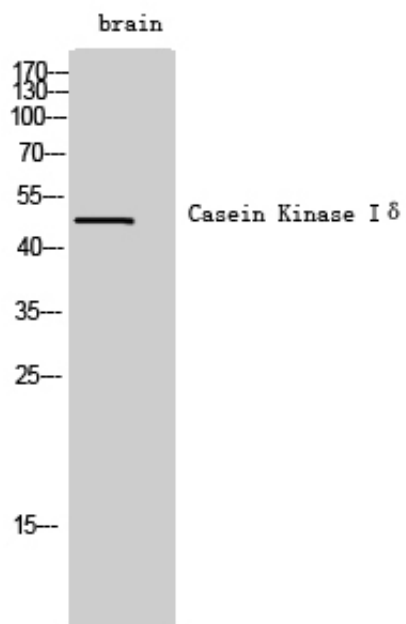
Catalog_no :	AT0650
Applications :	WB,ELISA
Reactivity :	Human,Mouse,Rat
Category :	抗原抗体
Size :	100 μ g/50 μ g/20 μ g
Gene_name :	CSNK1D
Protein_name :	Casein kinase I isoform delta
Humangene_id :	1453
Humanswissprot_no :	P48730
Mousegene_id :	104318
Mouseswissprot_no :	Q9DC28
Ratgene_id :	64462
Ratswissprot_no :	Q06486
Immunogen :	The antiserum was produced against synthesized peptide derived from human CSNK1D. AA range:291-340
Specificity :	Casein Kinase I δ Polyclonal Antibody detects endogenous levels of Casein Kinase I δ protein.
Formulation :	Liquid in PBS containing 50% glycerol, 0.5% BSA and 0.02% sodium azide.
Source :	Rabbit
Dilution :	Western Blot: 1/500 - 1/2000. ELISA: 1/40000. Not yet tested in other applications.
Purification :	The antibody was affinity-purified from rabbit antiserum by affinity-chromatography using epitope-specific immunogen.
Concentration :	1 mg/ml
Storage_stability :	-20°C/1 year
Msds :	MSDS_Antibody.pdf



Other_name : CSNK1D; HCKID; Casein kinase I isoform delta; CKI-delta; CKId; Tau-protein kinase
CSNK1D

Molecular Weight : 47KD

Product Images



Western Blot analysis of brain cells using Casein Kinase I δ Polyclonal Antibody