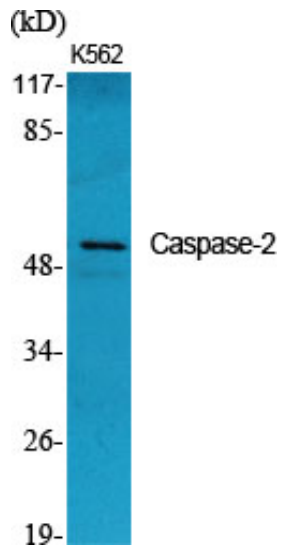


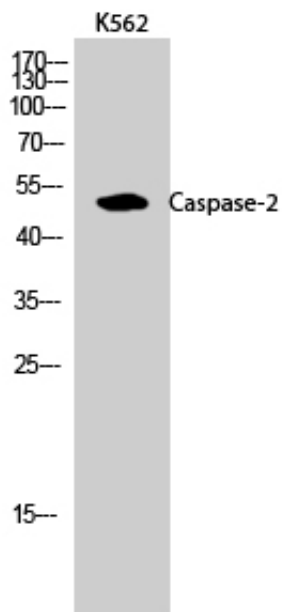
Caspase-2 Polyclonal Antibody

Catalog_no :	AT0655
Applications :	WB,IHC-p,ELISA
Reactivity :	Human
Category :	抗原抗体
Size :	100µg/50µg/20µg
Gene_name :	CASP2
Protein_name :	Caspase-2
Humangene_id :	835
Humanswissprot_no :	P42575
Immunogen :	The antiserum was produced against synthesized peptide derived from human Caspase 2. AA range:123-172
Specificity :	Caspase-2 Polyclonal Antibody detects endogenous levels of Caspase-2 protein.
Formulation :	Liquid in PBS containing 50% glycerol, 0.5% BSA and 0.02% sodium azide.
Source :	Rabbit
Dilution :	Western Blot: 1/500 - 1/2000. Immunohistochemistry: 1/100 - 1/300. ELISA: 1/10000. Not yet tested in other applications.
Purification :	The antibody was affinity-purified from rabbit antiserum by affinity-chromatography using epitope-specific immunogen.
Concentration :	1 mg/ml
Storage_stability :	-20°C/1 year
Msds :	MSDS_Antibody.pdf
Other_name :	CASP2; ICH1; NEDD2; Caspase-2; CASP-2; Neural precursor cell expressed developmentally down-regulated protein 2; NEDD-2; Protease ICH-1
Molecular Weight :	51KD

Product Images



Western Blot analysis of various cells using Caspase-2 Polyclonal Antibody



Western Blot analysis of K562 cells using Caspase-2 Polyclonal Antibody