



## Caspase-6 Polyclonal Antibody

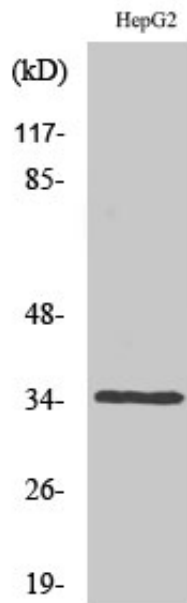
|                   |   |
|-------------------|---|
| Catalog_no :      | <u>AT0658</u>   |
| Applications :    | <u>WB,IHC-p,IF,ELISA</u>  |
| Reactivity :      | <u>Human,Mouse,Rat</u>  |
| Category :        | <u>抗原抗体</u>   |
| Size :            | <u>100µg/50µg/20µg</u>  |
| Gene_name :       | <u>CASP6</u>  |
| Protein_name :    | <u>Caspase-6</u>  |
| Humangene_id      | <u><a href="#">839</a></u>  |
| :                 |   |
| Humanswissprot    | <u><a href="#">P55212</a></u>   |
| _no :             |   |
| Mousegene_id :    | <u><a href="#">12368</a></u>  |
| Mouseswissprot    | <u><a href="#">O08738</a></u>   |
| _no :             |   |
| Ratswissprot_no   | <u><a href="#">O35397</a></u>   |
| :                 |   |
| Immunogen :       | <u>The antiserum was produced against synthesized peptide derived from human Caspase 6. AA range:223-272</u>  |
| Specificity :     | <u>Caspase-6 Polyclonal Antibody detects endogenous levels of Caspase-6 protein.</u>  |
| Formulation :     | <u>Liquid in PBS containing 50% glycerol, 0.5% BSA and 0.02% sodium azide.</u>  |
| Source :          | <u>Rabbit</u>   |
| Dilution :        | <u>Western Blot: 1/500 - 1/2000. Immunohistochemistry: 1/100 - 1/300. Immunofluorescence: 1/200 - 1/1000. ELISA: 1/20000. Not yet tested in other applications.</u> |
| Purification :    | <u>The antibody was affinity-purified from rabbit antiserum by affinity-chromatography using epitope-specific immunogen.</u>  |
| Concentration :   | <u>1 mg/ml</u>  |
| Storage_stability | <u>-20°C/1 year</u>   |
| :                 |   |
| Msds :            | <u>MSDS_Antibody.pdf</u>  |



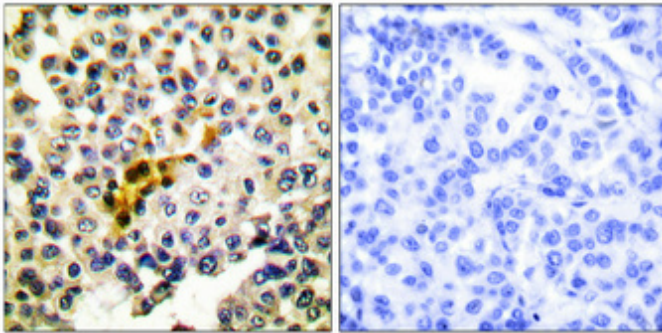
Other\_name : CASP6; MCH2; Caspase-6; CASP-6; Apoptotic protease Mch-2

Molecular Weight : 35KD

## Product Images



Western Blot analysis of various cells using Caspase-6 Polyclonal Antibody diluted at 1 : 1000



Immunohistochemical analysis of paraffin-embedded Human breast cancer. Antibody was diluted at 1:100(4°,overnight). High-pressure and temperature Tris-EDTA,pH8.0 was used for antigen retrieval. Negative contrl (right) obtaned from antibody was pre-absorbed by immunogen peptide.