

Caspase-9 Polyclonal Antibody

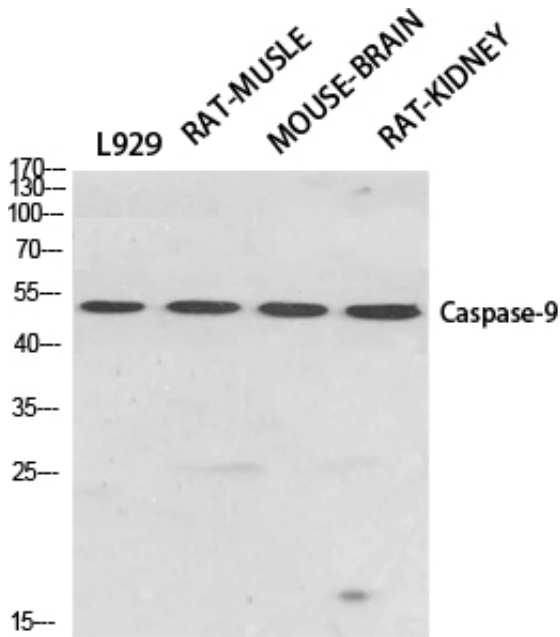
Catalog_no :	AT0662
Applications :	WB,IHC-p,IF,ELISA
Reactivity :	Human,Mouse,Rat
Category :	抗原抗体
Size :	100µg/50µg/20µg
Gene_name :	CASP9
Protein_name :	Caspase-9
Humangene_id :	842
Humanswissprot_no :	P55211
Ratgene_id :	58918
Ratswissprot_no :	Q9JHK1
Immunogen :	The antiserum was produced against synthesized peptide derived from human Caspase 9. AA range:91-140
Specificity :	Caspase-9 Polyclonal Antibody detects endogenous levels of Caspase-9 protein.
Formulation :	Liquid in PBS containing 50% glycerol, 0.5% BSA and 0.02% sodium azide.
Source :	Rabbit
Dilution :	Western Blot: 1/500 - 1/2000. Immunohistochemistry: 1/100 - 1/300. Immunofluorescence: 1/200 - 1/1000. ELISA: 1/5000. Not yet tested in other applications.
Purification :	The antibody was affinity-purified from rabbit antiserum by affinity-chromatography using epitope-specific immunogen.
Concentration :	1 mg/ml
Storage_stability :	-20°C/1 year
Msds :	MSDS_Antibody.pdf
Other_name :	CASP9; MCH6; Caspase-9; CASP-9; Apoptotic protease Mch-6; Apoptotic protease-activating factor 3; APAF-3; ICE-like apoptotic protease 6; ICE-LAP6



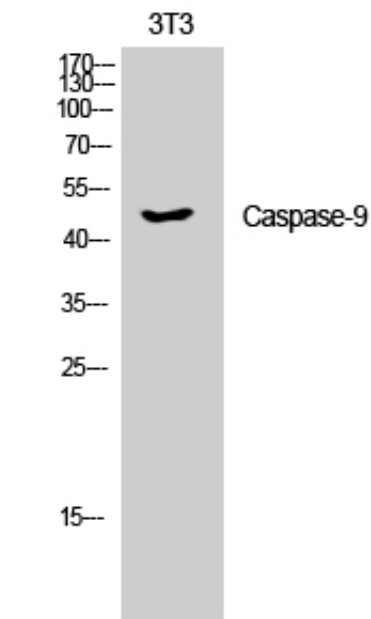
Molecular
Weight :

46KD

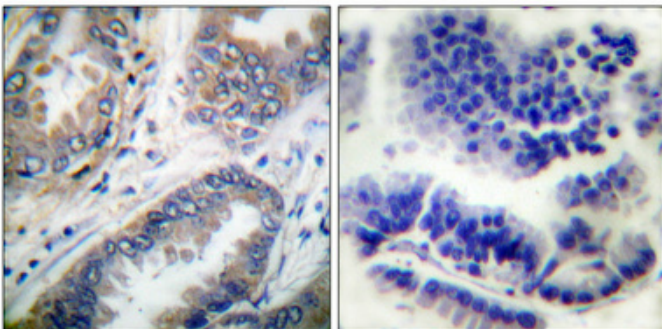
Product Images



Western Blot analysis of various cells using Caspase-9 Polyclonal Antibody diluted at 1 : 500



Western Blot analysis of 3T3 cells using Caspase-9 Polyclonal Antibody diluted at 1 : 500



Immunohistochemical analysis of paraffin-embedded Human lung cancer. Antibody was diluted at 1:100(4°,overnight). High-pressure and temperature Tris-EDTA,pH8.0 was used for antigen retrieval. Negative contrl (right) obtaned from antibody was pre-absorbed by immunogen peptide.