

Catenin- $\alpha$  E/N Polyclonal Antibody

Catalog_no :	AT0669
Applications :	WB,IHC-p,IF,ELISA
Reactivity :	Human,Mouse,Rat
Category :	抗原抗体
Size :	100 $\mu$ g/50 $\mu$ g/20 $\mu$ g
Gene_name :	CTNNA1/CTNNA2
Protein_name :	Catenin alpha-1/2
Humangene_id :	<a href="#">1495/1496</a>
Humanswissprot_no :	<a href="#">P35221/P26232</a>
Mousegene_id :	<a href="#">12385/12386</a>
Immunogen :	The antiserum was produced against synthesized peptide derived from human Catenin-alpha1. AA range:857-906
Specificity :	Catenin- $\alpha$ E/N Polyclonal Antibody detects endogenous levels of Catenin- $\alpha$ E/N protein.
Formulation :	Liquid in PBS containing 50% glycerol, 0.5% BSA and 0.02% sodium azide.
Source :	Rabbit
Dilution :	Western Blot: 1/500 - 1/2000. Immunohistochemistry: 1/100 - 1/300. Immunofluorescence: 1/200 - 1/1000. ELISA: 1/5000. Not yet tested in other applications.
Purification :	The antibody was affinity-purified from rabbit antiserum by affinity-chromatography using epitope-specific immunogen.
Concentration :	1 mg/ml
Storage_stability :	-20°C/1 year
Msds :	MSDS_Antibody.pdf
Other_name :	CTNNA1; Catenin alpha-1; Alpha E-catenin; Cadherin-associated protein; Renal carcinoma antigen NY-REN-13; CTNNA2; CAPR; Catenin alpha-2; Alpha N-catenin; Alpha-catenin-related protein
Molecular Weight :	100KD

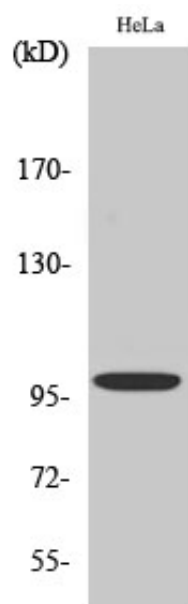


**专注二抗产品**

Biodragon旗下品牌

---

## Product Images



Western Blot analysis of various cells using Catenin- $\alpha$  E/N Polyclonal Antibody diluted at 1 : 500