

Catenin- $\beta$  Polyclonal Antibody

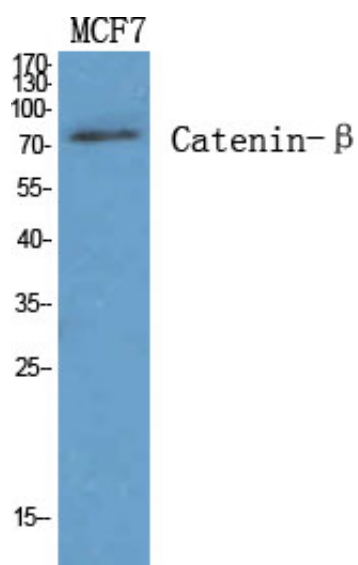
Catalog_no :	<u>AT0676</u>
Applications :	<u>WB,IHC-p,ELISA</u>
Reactivity :	<u>Human,Mouse,Rat</u>
Category :	<u>抗原抗体</u>
Size :	<u>100<math>\mu</math>g/50<math>\mu</math>g/20<math>\mu</math>g</u>
Gene_name :	<u>CTNNB1</u>
Protein_name :	<u>Catenin beta-1</u>
Humangene_id :	<u><a href="#">1499</a></u>
Humanswissprot_no :	<u><a href="#">P35222</a></u>
Mousegene_id :	<u><a href="#">12387</a></u>
Mouseswissprot_no :	<u><a href="#">Q02248</a></u>
Ratgene_id :	<u><a href="#">84353</a></u>
Ratswissprot_no :	<u><a href="#">Q9WU82</a></u>
Immunogen :	<u>The antiserum was produced against synthesized peptide derived from human Catenin-beta. AA range:3-52</u>
Specificity :	<u>Catenin-<math>\beta</math> Polyclonal Antibody detects endogenous levels of Catenin-<math>\beta</math> protein.</u>
Formulation :	<u>Liquid in PBS containing 50% glycerol, 0.5% BSA and 0.02% sodium azide.</u>
Source :	<u>Rabbit</u>
Dilution :	<u>Western Blot: 1/500 - 1/2000. Immunohistochemistry: 1/100 - 1/300. ELISA: 1/20000. Not yet tested in other applications.</u>
Purification :	<u>The antibody was affinity-purified from rabbit antiserum by affinity-chromatography using epitope-specific immunogen.</u>
Concentration :	<u>1 mg/ml</u>
Storage_stability :	<u>-20°C/1 year</u>
Msds :	<u>MSDS_Antibody.pdf</u>



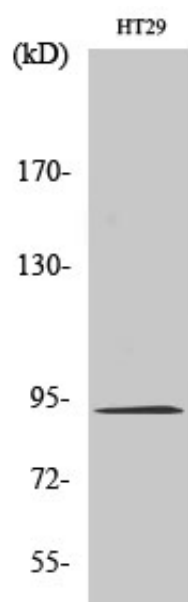
Other\_name : CTNNB1; CTNNB; OK/SW-cl.35; Catenin beta-1; Beta-catenin

Molecular Weight : 85KD

## Product Images



Western Blot analysis of various cells using Catenin- $\beta$  Polyclonal Antibody diluted at 1 : 1000



Western Blot analysis of HT29 cells using Catenin- $\beta$  Polyclonal Antibody diluted at 1 : 1000