

Catenin-β1 Polyclonal Antibody

Catalog_no :	<u>AT0677</u>
Applications :	<u>WB,IHC-p,IF,ELISA</u>
Reactivity :	<u>Human,Mouse,Rat</u>
Category :	<u>抗原抗体</u>
Size :	<u>100μg/50μg/20μg</u>
Gene_name :	<u>CTNNB1</u>
Protein_name :	<u>Catenin beta-1</u>
Humangene_id	<u>1499</u>
:	<u></u>
Humanswissprot	<u>P35222</u>
_no :	<u></u>
Mousegene_id :	<u>12387</u>
Mouseswissprot	<u>Q02248</u>
_no :	<u></u>
Ratgene_id :	<u>84353</u>
Ratswissprot_no	<u>Q9WU82</u>
:	<u></u>
Immunogen :	<u>The antiserum was produced against synthesized peptide derived from human Catenin-beta1. AA range:626-675</u>
Specificity :	<u>Catenin-β1 Polyclonal Antibody detects endogenous levels of Catenin-β1 protein.</u>
Formulation :	<u>Liquid in PBS containing 50% glycerol, 0.5% BSA and 0.02% sodium azide.</u>
Source :	<u>Rabbit</u>
Dilution :	<u>Western Blot: 1/500 - 1/2000. Immunohistochemistry: 1/100 - 1/300. Immunofluorescence: 1/200 - 1/1000. ELISA: 1/10000. Not yet tested in other applications.</u>
Purification :	<u>The antibody was affinity-purified from rabbit antiserum by affinity-chromatography using epitope-specific immunogen.</u>
Concentration :	<u>1 mg/ml</u>
Storage_stability	<u>-20°C/1 year</u>
:	<u></u>

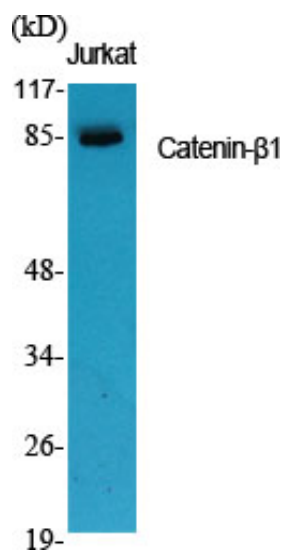


MsdS : MSDS_Antibody.pdf

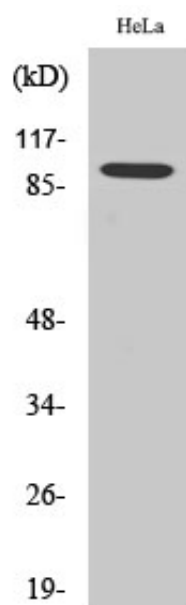
Other_name : CTNNB1; CTNNB; OK/SW-cl.35; Catenin beta-1; Beta-catenin

Molecular Weight : 85KD

Product Images



Western Blot analysis of various cells using Catenin- β 1 Polyclonal Antibody diluted at 1 : 1000



Western Blot analysis of HeLa cells using Catenin- β 1 Polyclonal Antibody diluted at 1 : 1000