

Catenin-γ Polyclonal Antibody

Catalog_no :	AT0678
Applications :	WB,IHC-p,IF,ELISA
Reactivity :	Human,Mouse,Rat
Category :	抗原抗体
Size :	100μg/50μg/20μg
Gene_name :	JUP
Protein_name :	Junction plakoglobin
Humangene_id :	3728
Humanswissprot_no :	P14923
Mousegene_id :	16480
Mouseswissprot_no :	Q02257
Ratgene_id :	81679
Ratswissprot_no :	Q6P0K8
Immunogen :	The antiserum was produced against synthesized peptide derived from human Catenin-gamma. AA range:696-745
Specificity :	Catenin-γ Polyclonal Antibody detects endogenous levels of Catenin-γ protein.
Formulation :	Liquid in PBS containing 50% glycerol, 0.5% BSA and 0.02% sodium azide.
Source :	Rabbit
Dilution :	Western Blot: 1/500 - 1/2000. Immunohistochemistry: 1/100 - 1/300. Immunofluorescence: 1/200 - 1/1000. ELISA: 1/20000. Not yet tested in other applications.
Purification :	The antibody was affinity-purified from rabbit antiserum by affinity-chromatography using epitope-specific immunogen.
Concentration :	1 mg/ml
Storage_stability :	-20°C/1 year

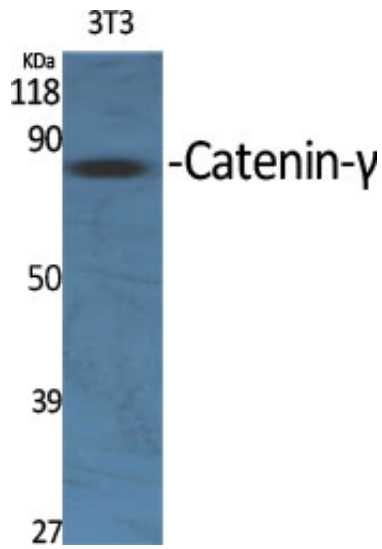


Msd : MSDS_Antibody.pdf

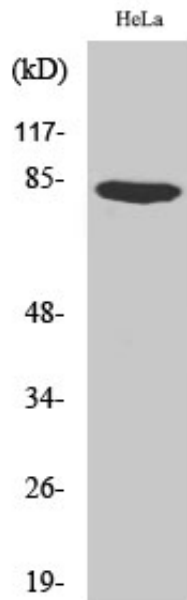
Other_name : JUP; CTNNG; DP3; Junction plakoglobin; Catenin gamma; Desmoplakin III; Desmoplakin-3

Molecular Weight : 82KD

Product Images



Western Blot analysis of various cells using Catenin- γ Polyclonal Antibody diluted at 1 : 2000



Western Blot analysis of HeLa cells using Catenin- γ Polyclonal Antibody diluted at 1 : 2000