

Cathepsin B Polyclonal Antibody

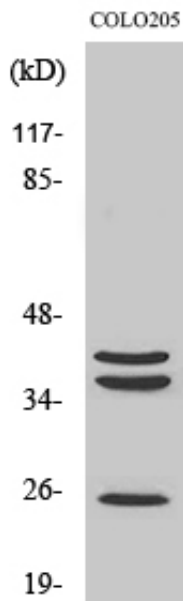
Catalog_no :	AT0679
Applications :	WB,IHC-p,ELISA
Reactivity :	Human,Mouse,Rat
Category :	抗原抗体
Size :	100µg/50µg/20µg
Gene_name :	CTSB
Protein_name :	Cathepsin B
Humangene_id	1508
:	
Humanswissprot	P07858
_no :	
Mousegene_id :	13030
Mouseswissprot	P10605
_no :	
Ratswissprot_no	P00787
:	
Immunogen :	The antiserum was produced against synthesized peptide derived from human Cathepsin B. AA range:168-217
Specificity :	Cathepsin B Polyclonal Antibody detects endogenous levels of Cathepsin B protein.
Formulation :	Liquid in PBS containing 50% glycerol, 0.5% BSA and 0.02% sodium azide.
Source :	Rabbit
Dilution :	Western Blot: 1/500 - 1/2000. Immunohistochemistry: 1/100 - 1/300. ELISA: 1/5000. Not yet tested in other applications.
Purification :	The antibody was affinity-purified from rabbit antiserum by affinity-chromatography using epitope-specific immunogen.
Concentration :	1 mg/ml
Storage_stability	-20°C/1 year
:	
Msds :	MSDS_Antibody.pdf
Other_name :	CTSB; CPSB; Cathepsin B; APP secretase; APPS; Cathepsin B1



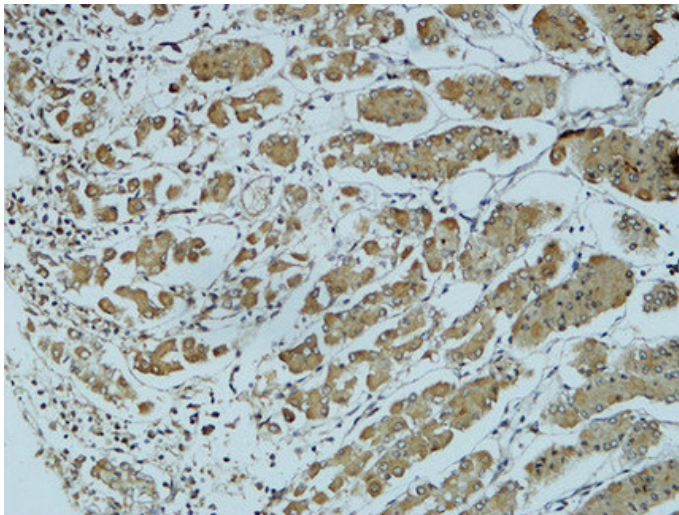
Molecular
Weight :

38KD,40KD,25KD

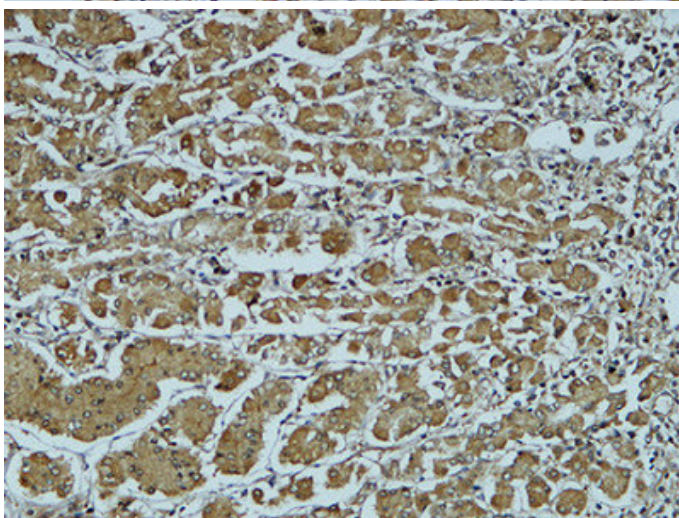
Product Images



Western Blot analysis of various cells using Cathepsin B Polyclonal Antibody

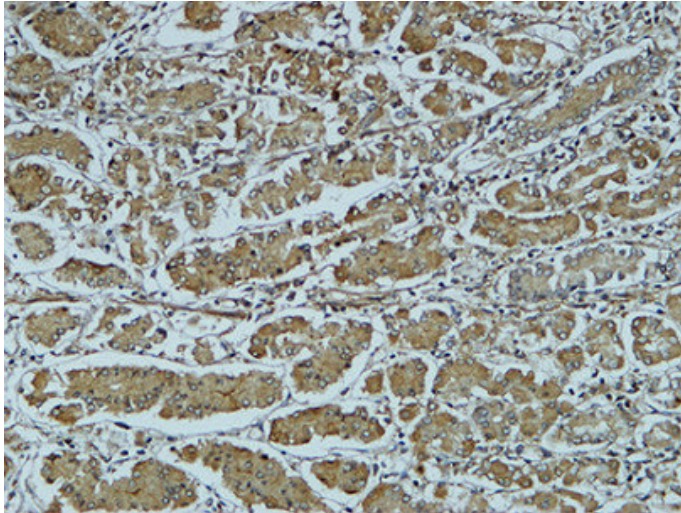


Immunohistochemical analysis of paraffin-embedded Human colon. 1, Antibody was diluted at 1:200(4°, overnight). 2, High-pressure and temperature EDTA, pH8.0 was used for antigen retrieval. 3, Secondary antibody was diluted at 1:200(room temperature, 30min).



Immunohistochemical analysis of paraffin-embedded Human colon. 1, Antibody was diluted at 1:200(4°, overnight). 2, High-pressure and temperature EDTA, pH8.0 was used for antigen retrieval. 3, Secondary antibody was diluted at 1:200(room temperature, 30min).

Immunohistochemical analysis of paraffin-embedded Human colon. 1, Antibody was diluted at



1:200(4°,overnight). 2, High-pressure and temperature EDTA, pH8.0 was used for antigen retrieval. 3,Secondary antibody was diluted at 1:200(room temperature, 30min).