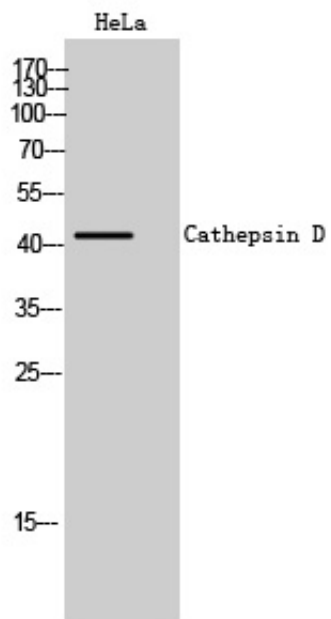




## Cathepsin D Polyclonal Antibody

Catalog_no :	AT0680
Applications :	WB,IHC-p,ELISA
Reactivity :	Human,Mouse
Category :	抗原抗体
Size :	100µg/50µg/20µg
Gene_name :	CTSD
Protein_name :	Cathepsin D
Humangene_id	<a href="#">1509</a>
:	
Humanswissprot	<a href="#">P07339</a>
_no :	
Mousegene_id :	<a href="#">13033</a>
Mouseswissprot	<a href="#">P18242</a>
_no :	
Immunogen :	Synthesized peptide derived from the Internal region of human Cathepsin D.
Specificity :	Cathepsin D Polyclonal Antibody detects endogenous levels of Cathepsin D protein.
Formulation :	Liquid in PBS containing 50% glycerol, 0.5% BSA and 0.02% sodium azide.
Source :	Rabbit
Dilution :	Western Blot: 1/500 - 1/2000. Immunohistochemistry: 1/100 - 1/300. ELISA: 1/5000. Not yet tested in other applications.
Purification :	The antibody was affinity-purified from rabbit antiserum by affinity-chromatography using epitope-specific immunogen.
Concentration :	1 mg/ml
Storage_stability	-20°C/1 year
:	
Msds :	<a href="#">MSDS_Antibody.pdf</a>
Other_name :	CTSD; CPSD; Cathepsin D
Molecular Weight :	44KD

## Product Images



Western Blot analysis of HeLa cells using Cathepsin D Polyclonal Antibody