



## CB1 Polyclonal Antibody

Catalog_no :	<u>AT0687</u>
Applications :	<u>WB,IHC-p,IF,ELISA</u>
Reactivity :	<u>Human,Mouse,Rat,Monkey</u>
Category :	<u>抗原抗体</u>
Size :	<u>100µg/50µg/20µg</u>
Gene_name :	<u>CNR1</u>
Protein_name :	<u>Cannabinoid receptor 1</u>
Humangene_id :	<u><a href="#">1268</a></u>
Humanswissprot_no :	<u><a href="#">P21554</a></u>
Mousegene_id :	<u><a href="#">12801</a></u>
Mouseswissprot_no :	<u><a href="#">P47746</a></u>
Ratgene_id :	<u><a href="#">25248</a></u>
Ratswissprot_no :	<u><a href="#">P20272</a></u>
Immunogen :	<u>The antiserum was produced against synthesized peptide derived from human CNR1. AA range:151-200</u>
Specificity :	<u>CB1 Polyclonal Antibody detects endogenous levels of CB1 protein.</u>
Formulation :	<u>Liquid in PBS containing 50% glycerol, 0.5% BSA and 0.02% sodium azide.</u>
Source :	<u>Rabbit</u>
Dilution :	<u>Western Blot: 1/500 - 1/2000. Immunohistochemistry: 1/100 - 1/300. Immunofluorescence: 1/200 - 1/1000. ELISA: 1/10000. Not yet tested in other applications.</u>
Purification :	<u>The antibody was affinity-purified from rabbit antiserum by affinity-chromatography using epitope-specific immunogen.</u>
Concentration :	<u>1 mg/ml</u>
Storage_stability :	<u>-20°C/1 year</u>

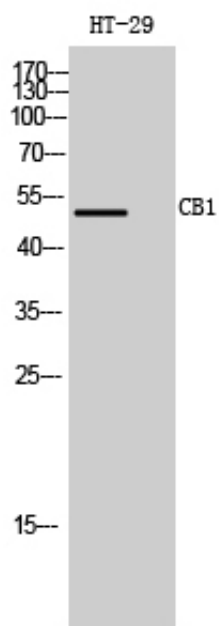


Msd : MSDS\_Antibody.pdf

Other\_name : CNR1; CNR; Cannabinoid receptor 1; CB-R; CB1; CANN6

Molecular Weight : 53KD

Product Images



Western Blot analysis of HT-29 cells using CB1 Polyclonal Antibody