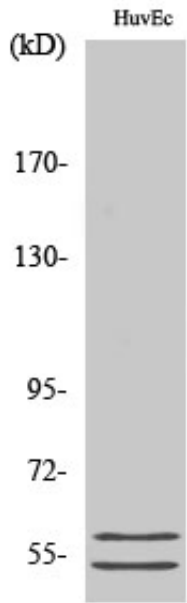




CBG Polyclonal Antibody

Catalog_no :	AT0689
Applications :	WB,ELISA
Reactivity :	Human
Category :	抗原抗体
Size :	100µg/50µg/20µg
Gene_name :	GBA3
Protein_name :	Cytosolic beta-glucosidase
Humangene_id :	57733
Humanswissprot_no :	Q9H227
Immunogen :	The antiserum was produced against synthesized peptide derived from human GBA3. AA range:291-340
Specificity :	CBG Polyclonal Antibody detects endogenous levels of CBG protein.
Formulation :	Liquid in PBS containing 50% glycerol, 0.5% BSA and 0.02% sodium azide.
Source :	Rabbit
Dilution :	Western Blot: 1/500 - 1/2000. ELISA: 1/20000. Not yet tested in other applications.
Purification :	The antibody was affinity-purified from rabbit antiserum by affinity-chromatography using epitope-specific immunogen.
Concentration :	1 mg/ml
Storage_stability :	-20°C/1 year
Msds :	MSDS_Antibody.pdf
Other_name :	GBA3; CBG; CBGL1; Cytosolic beta-glucosidase; Cytosolic beta-glucosidase-like protein 1
Molecular Weight :	54-58KD

Product Images



Western Blot analysis of various cells using CBG Polyclonal Antibody diluted at 1 : 500