

Cbl Polyclonal Antibody

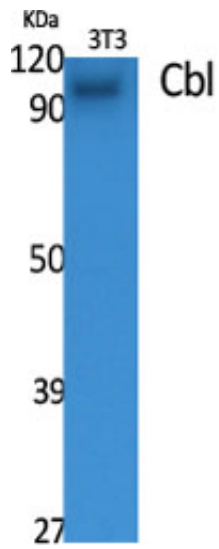
Catalog_no :	AT0690
Applications :	WB,IHC-p,IF,ELISA
Reactivity :	Human,Mouse,Rat
Category :	抗原抗体
Size :	100µg/50µg/20µg
Gene_name :	CBL
Protein_name :	E3 ubiquitin-protein ligase CBL
Humangene_id :	867
Humanswissprot_no :	P22681
Mousegene_id :	12402
Mouseswissprot_no :	P22682
Immunogen :	The antiserum was produced against synthesized peptide derived from human CBL. AA range:740-789
Specificity :	Cbl Polyclonal Antibody detects endogenous levels of Cbl protein.
Formulation :	Liquid in PBS containing 50% glycerol, 0.5% BSA and 0.02% sodium azide.
Source :	Rabbit
Dilution :	Western Blot: 1/500 - 1/2000. Immunohistochemistry: 1/100 - 1/300. Immunofluorescence: 1/200 - 1/1000. ELISA: 1/5000. Not yet tested in other applications.
Purification :	The antibody was affinity-purified from rabbit antiserum by affinity-chromatography using epitope-specific immunogen.
Concentration :	1 mg/ml
Storage_stability :	-20°C/1 year
Msds :	MSDS_Antibody.pdf
Other_name :	CBL; CBL2; RNF55; E3 ubiquitin-protein ligase CBL; Casitas B-lineage lymphoma proto-oncogene; Proto-oncogene c-Cbl; RING finger protein 55; Signal transduction protein CBL



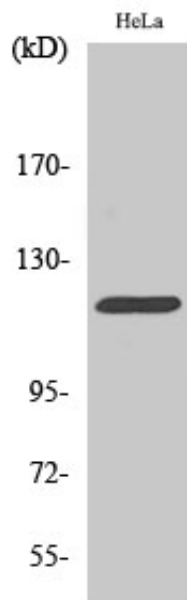
Molecular
Weight :

100KD

Product Images



Western Blot analysis of various cells using Cbl Polyclonal Antibody



Western Blot analysis of HeLa cells using Cbl Polyclonal Antibody