

CBP Polyclonal Antibody

| | |
|---------------------|--|
| Catalog_no : | AT0693 |
| Applications : | WB,IHC-p,IF,ELISA |
| Reactivity : | Human,Mouse,Rat |
| Category : | 抗原抗体 |
| Size : | 100µg/50µg/20µg |
| Gene_name : | CREBBP |
| Protein_name : | CREB-binding protein |
| Humangene_id : | 1387 |
| Humanswissprot_no : | Q92793 |
| Mouseswissprot_no : | P45481 |
| Ratswissprot_no : | Q6JHU9 |
| Immunogen : | The antiserum was produced against synthesized peptide derived from human CBP. AA range:1501-1550 |
| Specificity : | CBP Polyclonal Antibody detects endogenous levels of CBP protein. |
| Formulation : | Liquid in PBS containing 50% glycerol, 0.5% BSA and 0.02% sodium azide. |
| Source : | Rabbit |
| Dilution : | Western Blot: 1/500 - 1/2000. Immunohistochemistry: 1/100 - 1/300. Immunofluorescence: 1/200 - 1/1000. ELISA: 1/20000. Not yet tested in other applications. |
| Purification : | The antibody was affinity-purified from rabbit antiserum by affinity-chromatography using epitope-specific immunogen. |
| Concentration : | 1 mg/ml |
| Storage_stability : | -20°C/1 year |
| Msds : | MSDS_Antibody.pdf |
| Other_name : | CREBBP; CBP; CREB-binding protein |

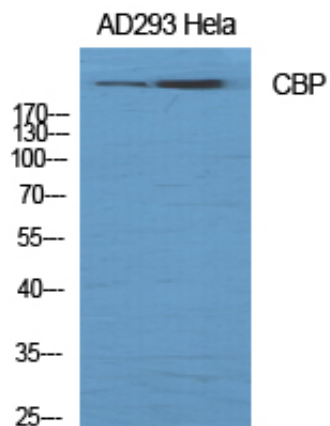


Molecular
Weight :

265KD

Product Images

Western Blot analysis of various cells using CBP Polyclonal Antibody diluted at 1 : 1000



Western Blot analysis of HT29 cells using CBP Polyclonal Antibody diluted at 1 : 1000

