

CBP20 Polyclonal Antibody

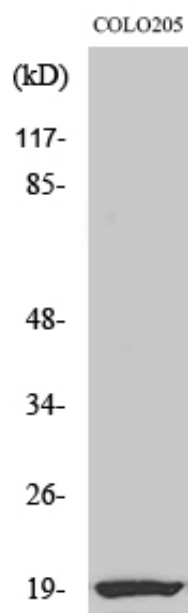
Catalog_no :	AT0696
Applications :	WB,IHC-p,IF,ELISA
Reactivity :	Human,Mouse
Category :	抗原抗体
Size :	100µg/50µg/20µg
Gene_name :	NCBP2
Protein_name :	Nuclear cap-binding protein subunit 2
Humangene_id :	22916
Humanswissprot_no :	P52298
Mousegene_id :	68092
Mouseswissprot_no :	Q9CQ49
Immunogen :	The antiserum was produced against synthesized peptide derived from human NCBP2. AA range:10-59
Specificity :	CBP20 Polyclonal Antibody detects endogenous levels of CBP20 protein.
Formulation :	Liquid in PBS containing 50% glycerol, 0.5% BSA and 0.02% sodium azide.
Source :	Rabbit
Dilution :	Western Blot: 1/500 - 1/2000. Immunohistochemistry: 1/100 - 1/300. Immunofluorescence: 1/200 - 1/1000. ELISA: 1/5000. Not yet tested in other applications.
Purification :	The antibody was affinity-purified from rabbit antiserum by affinity-chromatography using epitope-specific immunogen.
Concentration :	1 mg/ml
Storage_stability :	-20°C/1 year
Msds :	MSDS_Antibody.pdf
Other_name :	NCBP2; CBP20; PIG55; Nuclear cap-binding protein subunit 2; 20 kDa nuclear cap-binding protein; Cell proliferation-inducing gene 55 protein; NCBP 20 kDa subunit; CBP20; NCBP-interacting protein 1; NIP1



Molecular
Weight :

18KD

Product Images



Western Blot analysis of various cells using CBP20 Polyclonal Antibody