

## CBP80 Polyclonal Antibody

Catalog_no :	AT0697
Applications :	WB,IHC-p,ELISA
Reactivity :	Human,Mouse,Rat
Category :	抗原抗体
Size :	100µg/50µg/20µg
Gene_name :	NCBP1
Protein_name :	Nuclear cap-binding protein subunit 1
Humangene_id :	<a href="#">4686</a>
Humanswissprot_no :	<a href="#">Q09161</a>
Mousegene_id :	<a href="#">433702</a>
Mouseswissprot_no :	<a href="#">Q3UYV9</a>
Ratgene_id :	<a href="#">298075</a>
Ratswissprot_no :	<a href="#">Q56A27</a>
Immunogen :	The antiserum was produced against synthesized peptide derived from human NCBP1. AA range:1-50
Specificity :	CBP80 Polyclonal Antibody detects endogenous levels of CBP80 protein.
Formulation :	Liquid in PBS containing 50% glycerol, 0.5% BSA and 0.02% sodium azide.
Source :	Rabbit
Dilution :	Western Blot: 1/500 - 1/2000. Immunohistochemistry: 1/100 - 1/300. ELISA: 1/20000. Not yet tested in other applications.
Purification :	The antibody was affinity-purified from rabbit antiserum by affinity-chromatography using epitope-specific immunogen.
Concentration :	1 mg/ml
Storage_stability :	-20°C/1 year
Msds :	MSDS_Antibody.pdf



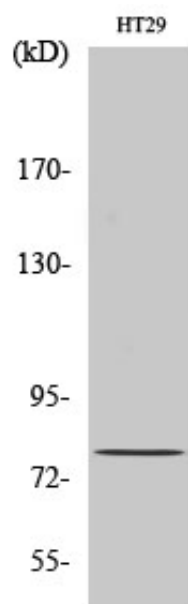
Other\_name : NCBP1; CBP80; NCBP; Nuclear cap-binding protein subunit 1; 80 kDa nuclear cap-binding protein; CBP80; NCBP 80 kDa subunit

---

Molecular Weight : 80KD

---

## Product Images



Western Blot analysis of various cells using CBP80 Polyclonal Antibody diluted at 1 : 500