



## CBX6 Polyclonal Antibody

Catalog_no :	<u>AT0699</u>
Applications :	<u>WB,IHC-p,ELISA</u>
Reactivity :	<u>Human,Mouse,Rat</u>
Category :	<u>抗原抗体</u>
Size :	<u>100µg/50µg/20µg</u>
Gene_name :	<u>CBX6</u>
Protein_name :	<u>Chromobox protein homolog 6</u>
Humangene_id :	<u><a href="#">23466</a></u>
Humanswissprot_no :	<u><a href="#">O95503</a></u>
Mousegene_id :	<u><a href="#">494448</a></u>
Mouseswissprot_no :	<u><a href="#">Q9DBY5</a></u>
Immunogen :	<u>The antiserum was produced against synthesized peptide derived from human CBX6. AA range:10-59</u>
Specificity :	<u>CBX6 Polyclonal Antibody detects endogenous levels of CBX6 protein.</u>
Formulation :	<u>Liquid in PBS containing 50% glycerol, 0.5% BSA and 0.02% sodium azide.</u>
Source :	<u>Rabbit</u>
Dilution :	<u>Western Blot: 1/500 - 1/2000. Immunohistochemistry: 1/100 - 1/300. ELISA: 1/20000. Not yet tested in other applications.</u>
Purification :	<u>The antibody was affinity-purified from rabbit antiserum by affinity-chromatography using epitope-specific immunogen.</u>
Concentration :	<u>1 mg/ml</u>
Storage_stability :	<u>-20°C/1 year</u>
Msds :	<u><a href="#">MSDS_Antibody.pdf</a></u>
Other_name :	<u>CBX6; Chromobox protein homolog 6</u>
Molecular Weight :	<u>44KD</u>

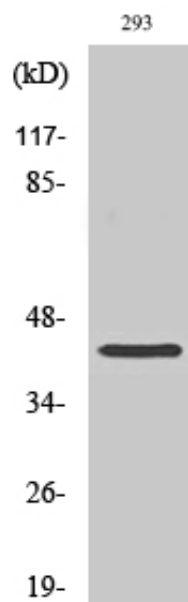


**专注二抗产品**

Biodragon旗下品牌

---

## Product Images



Western Blot analysis of various cells using CBX6 Polyclonal Antibody cells nucleus extracted by Minute TM Cytoplasmic and Nuclear Fractionation kit (SC-003, Invent biotech, MN, USA).