

CCDC45 Polyclonal Antibody

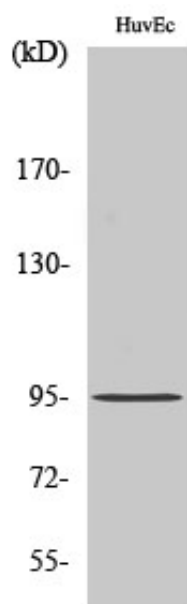
Catalog_no :	AT0704
Applications :	WB,ELISA
Reactivity :	Human,Mouse,Rat
Category :	抗原抗体
Size :	100µg/50µg/20µg
Gene_name :	CEP95
Protein_name :	Centrosomal protein of 95 kDa
Humangene_id :	90799
Humanswissprot_no :	Q96GE4
Mousegene_id :	320162
Mouseswissprot_no :	Q8BVV7
Ratgene_id :	287766
Ratswissprot_no :	Q5XI03
Immunogen :	The antiserum was produced against synthesized peptide derived from human CCDC45. AA range:591-640
Specificity :	CCDC45 Polyclonal Antibody detects endogenous levels of CCDC45 protein.
Formulation :	Liquid in PBS containing 50% glycerol, 0.5% BSA and 0.02% sodium azide.
Source :	Rabbit
Dilution :	Western Blot: 1/500 - 1/2000. ELISA: 1/40000. Not yet tested in other applications.
Purification :	The antibody was affinity-purified from rabbit antiserum by affinity-chromatography using epitope-specific immunogen.
Concentration :	1 mg/ml
Storage_stability :	-20°C/1 year
Msds :	MSDS_Antibody.pdf



Other_name : CEP95; CCDC45; CEP45; Centrosomal protein of 95 kDa; Coiled-coil domain-containing protein 45

Molecular Weight : 95KD

Product Images



Western Blot analysis of various cells using CDC45 Polyclonal Antibody