

## CCK-AR Polyclonal Antibody

Catalog_no :	AT0707
Applications :	WB,IHC-p,IF,ELISA
Reactivity :	Human,Mouse,Rat
Category :	抗原抗体
Size :	100µg/50µg/20µg
Gene_name :	CCKAR
Protein_name :	Cholecystokinin receptor type A
Humangene_id	<a href="#">886</a>
:	
Humanswissprot	<a href="#">P32238</a>
_no :	
Mousegene_id :	<a href="#">12425</a>
Mouseswissprot	<a href="#">O08786</a>
_no :	
Ratgene_id :	<a href="#">24889</a>
Ratswissprot_no	<a href="#">P30551</a>
:	
Immunogen :	The antiserum was produced against synthesized peptide derived from human CCKAR. AA range:215-264
Specificity :	CCK-AR Polyclonal Antibody detects endogenous levels of CCK-AR protein.
Formulation :	Liquid in PBS containing 50% glycerol, 0.5% BSA and 0.02% sodium azide.
Source :	Rabbit
Dilution :	Western Blot: 1/500 - 1/2000. Immunohistochemistry: 1/100 - 1/300. Immunofluorescence: 1/200 - 1/1000. ELISA: 1/10000. Not yet tested in other applications.
Purification :	The antibody was affinity-purified from rabbit antiserum by affinity-chromatography using epitope-specific immunogen.
Concentration :	1 mg/ml
Storage_stability	-20°C/1 year
:	

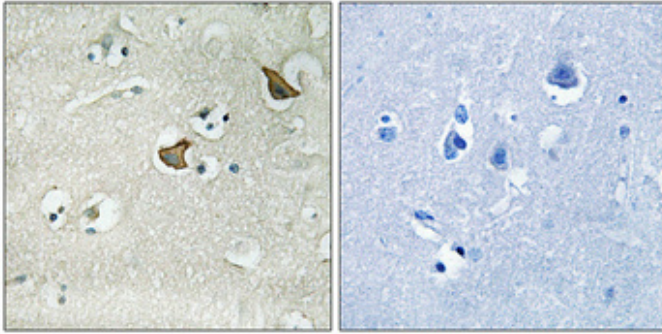


Msd : MSDS\_Antibody.pdf

Other\_name : CCKAR; CCKRA; Cholecystokinin receptor type A; CCK-A receptor; CCK-AR; Cholecystokinin-1 receptor; CCK1-R

Molecular Weight : 44KD

## Product Images



Immunohistochemical analysis of paraffin-embedded Human brain. Antibody was diluted at 1:100(4°,overnight). High-pressure and temperature Tris-EDTA,pH8.0 was used for antigen retrieval. Negative contrl (right) obtaned from antibody was pre-absorbed by immunogen peptide.