



## CCK-BR Polyclonal Antibody

Catalog_no :	<u>AT0708</u>
Applications :	<u>WB,ELISA</u>
Reactivity :	<u>Human,Mouse,Rat,Monkey</u>
Category :	<u>抗原抗体</u>
Size :	<u>100µg/50µg/20µg</u>
Gene_name :	<u>CCKBR</u>
Protein_name :	<u>Gastrin/cholecystokinin type B receptor</u>
Humangene_id	<u><a href="#">887</a></u>
:	<u></u>
Humanswissprot	<u><a href="#">P32239</a></u>
_no :	<u></u>
Mousegene_id :	<u><a href="#">12426</a></u>
Mouseswissprot	<u><a href="#">P56481</a></u>
_no :	<u></u>
Ratgene_id :	<u><a href="#">25706</a></u>
Ratswissprot_no	<u><a href="#">P30553</a></u>
:	<u></u>
Immunogen :	<u>The antiserum was produced against synthesized peptide derived from human CCKBR. AA range:11-60</u>
Specificity :	<u>CCK-BR Polyclonal Antibody detects endogenous levels of CCK-BR protein.</u>
Formulation :	<u>Liquid in PBS containing 50% glycerol, 0.5% BSA and 0.02% sodium azide.</u>
Source :	<u>Rabbit</u>
Dilution :	<u>Western Blot: 1/500 - 1/2000. ELISA: 1/20000. Not yet tested in other applications.</u>
Purification :	<u>The antibody was affinity-purified from rabbit antiserum by affinity-chromatography using epitope-specific immunogen.</u>
Concentration :	<u>1 mg/ml</u>
Storage_stability	<u>-20°C/1 year</u>
:	<u></u>
Msds :	<u>MSDS_Antibody.pdf</u>



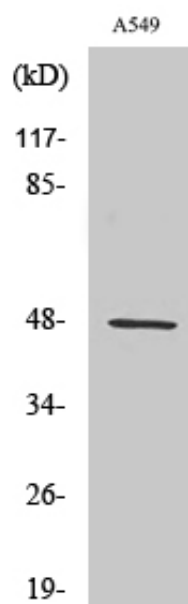
Other\_name : CCKBR; CCKRB; Gastrin/cholecystokinin type B receptor; CCK-B receptor; CCK-BR;  
Cholecystokinin-2 receptor; CCK2-R

---

Molecular Weight : 48KD

---

## Product Images



Western Blot analysis of various cells using CCK-BR Polyclonal Antibody