

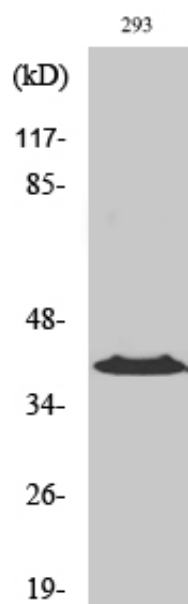
CCRL1 Polyclonal Antibody

Catalog_no :	AT0712
Applications :	WB,IF,ELISA
Reactivity :	Human,Mouse
Category :	抗原抗体
Size :	100µg/50µg/20µg
Gene_name :	CCRL1
Protein_name :	C-C chemokine receptor type 11
Humangene_id :	51554
Humanswissprot_no :	Q9NPB9
Mousegene_id :	252837
Mouseswissprot_no :	Q924I3
Immunogen :	The antiserum was produced against synthesized peptide derived from human CCRL1. AA range:5-54
Specificity :	CCRL1 Polyclonal Antibody detects endogenous levels of CCRL1 protein.
Formulation :	Liquid in PBS containing 50% glycerol, 0.5% BSA and 0.02% sodium azide.
Source :	Rabbit
Dilution :	Western Blot: 1/500 - 1/2000. Immunofluorescence: 1/200 - 1/1000. ELISA: 1/5000. Not yet tested in other applications.
Purification :	The antibody was affinity-purified from rabbit antiserum by affinity-chromatography using epitope-specific immunogen.
Concentration :	1 mg/ml
Storage_stability :	-20°C/1 year
Msds :	MSDS_Antibody.pdf
Other_name :	CCRL1; CCBP2; CCR11; VSHK1; C-C chemokine receptor type 11; C-C CKR-11; CC-CKR-11; CCR-11; CC chemokine receptor-like 1; CCRL1; CCX CKR
Molecular	40KD



Weight :

Product Images



Western Blot analysis of various cells using CCRL1 Polyclonal Antibody diluted at 1 : 1000