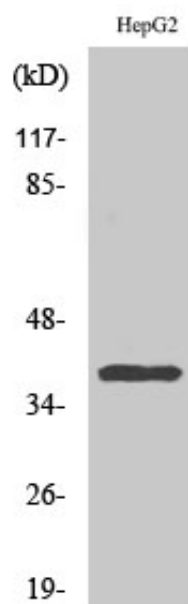


CCRL2 Polyclonal Antibody

Catalog_no :	AT0714
Applications :	WB,IF,ELISA
Reactivity :	Human
Category :	抗原抗体
Size :	100µg/50µg/20µg
Gene_name :	CCRL2
Protein_name :	C-C chemokine receptor-like 2
Humangene_id :	9034
Humanswissprot_no :	O00421
Immunogen :	The antiserum was produced against synthesized peptide derived from human CCRL2. AA range:141-190
Specificity :	CCRL2 Polyclonal Antibody detects endogenous levels of CCRL2 protein.
Formulation :	Liquid in PBS containing 50% glycerol, 0.5% BSA and 0.02% sodium azide.
Source :	Rabbit
Dilution :	Western Blot: 1/500 - 1/2000. Immunofluorescence: 1/200 - 1/1000. ELISA: 1/20000. Not yet tested in other applications.
Purification :	The antibody was affinity-purified from rabbit antiserum by affinity-chromatography using epitope-specific immunogen.
Concentration :	1 mg/ml
Storage_stability :	-20°C/1 year
Msds :	MSDS_Antibody.pdf
Other_name :	CCRL2; CCR11; CCR6; CKRX; CRAM; HCR; C-C chemokine receptor-like 2; Chemokine receptor CCR11; Chemokine receptor X; Putative MCP-1 chemokine receptor
Molecular Weight :	40KD

Product Images



Western Blot analysis of various cells using CCRL2 Polyclonal Antibody