

## CD108 Polyclonal Antibody

Catalog_no :	AT0717
Applications :	WB,ELISA
Reactivity :	Human,Mouse,Rat
Category :	抗原抗体
Size :	100µg/50µg/20µg
Gene_name :	SEMA7A
Protein_name :	Semaphorin-7A
Humangene_id :	<a href="#">8482</a>
Humanswissprot_no :	<a href="#">O75326</a>
Mousegene_id :	<a href="#">20361</a>
Mouseswissprot_no :	<a href="#">Q9QUR8</a>
Immunogen :	Synthesized peptide derived from CD108 . at AA range: 150-230
Specificity :	CD108 Polyclonal Antibody detects endogenous levels of CD108 protein.
Formulation :	Liquid in PBS containing 50% glycerol, 0.5% BSA and 0.02% sodium azide.
Source :	Rabbit
Dilution :	Western Blot: 1/500 - 1/2000. ELISA: 1/5000. Not yet tested in other applications.
Purification :	The antibody was affinity-purified from rabbit antiserum by affinity-chromatography using epitope-specific immunogen.
Concentration :	1 mg/ml
Storage_stability :	-20°C/1 year
Msds :	MSDS_Antibody.pdf
Other_name :	SEMA7A; CD108; SEMAL; Semaphorin-7A; CDw108; JMH blood group antigen; John-Milton-Hargen human blood group Ag; Semaphorin-K1; Sema K1; Semaphorin-L; Sema L; CD antigen CD108
Molecular Weight :	75KD

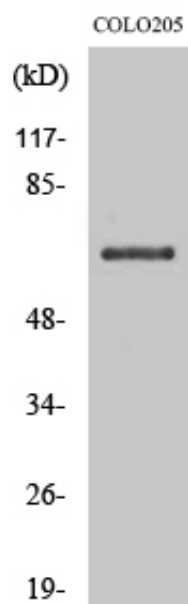


**专注二抗产品**

Biodragon旗下品牌

---

## Product Images



Western Blot analysis of various cells using CD108 Polyclonal Antibody