

CD130 Polyclonal Antibody

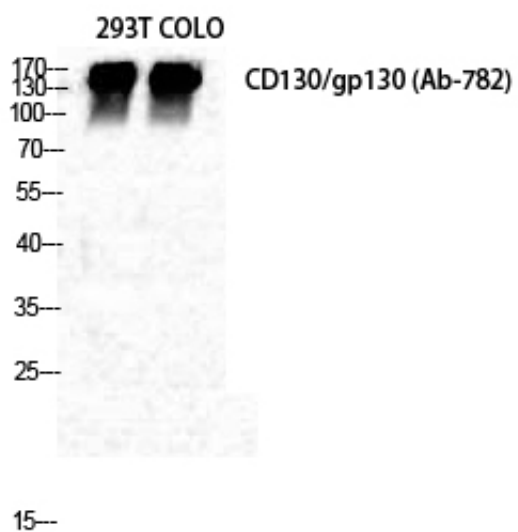
Catalog_no :	AT0721
Applications :	WB,IHC-p,IF,ELISA
Reactivity :	Human,Mouse
Category :	抗原抗体
Size :	100µg/50µg/20µg
Gene_name :	IL6ST
Protein_name :	Interleukin-6 receptor subunit beta
Humangene_id :	3572
Humanswissprot_no :	P40189
Mousegene_id :	16195
Mouseswissprot_no :	Q00560
Immunogen :	The antiserum was produced against synthesized peptide derived from human CD130/gp130. AA range:748-797
Specificity :	CD130 Polyclonal Antibody detects endogenous levels of CD130 protein.
Formulation :	Liquid in PBS containing 50% glycerol, 0.5% BSA and 0.02% sodium azide.
Source :	Rabbit
Dilution :	Western Blot: 1/500 - 1/2000. Immunohistochemistry: 1/100 - 1/300. Immunofluorescence: 1/200 - 1/1000. ELISA: 1/20000. Not yet tested in other applications.
Purification :	The antibody was affinity-purified from rabbit antiserum by affinity-chromatography using epitope-specific immunogen.
Concentration :	1 mg/ml
Storage_stability :	-20°C/1 year
Msds :	MSDS_Antibody.pdf
Other_name :	IL6ST; Interleukin-6 receptor subunit beta; IL-6 receptor subunit beta; IL-6R subunit beta; IL-6R-beta; IL-6RB; CDw130; Interleukin-6 signal transducer; Membrane glycoprotein 130; gp130; Oncostatin-M receptor subunit alpha; CD antigen CD130



Molecular
Weight :

160KD

Product Images



Western Blot analysis of 293T COLO cells using CD130 Polyclonal Antibody diluted at 1 : 500