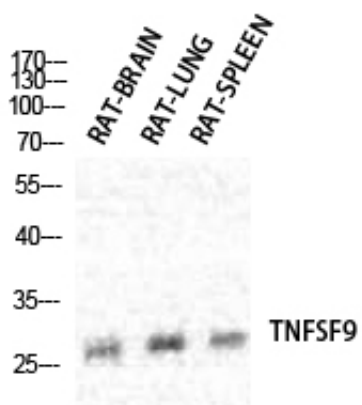




CD137L Polyclonal Antibody

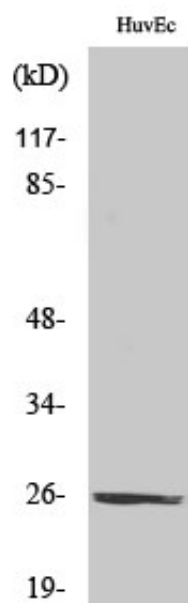
Catalog_no :	AT0723
Applications :	WB,IF,ELISA
Reactivity :	Human
Category :	抗原抗体
Size :	100µg/50µg/20µg
Gene_name :	TNFSF9
Protein_name :	Tumor necrosis factor ligand superfamily member 9
Humangene_id :	8744
Humanswissprot_no :	P41273
Immunogen :	The antiserum was produced against synthesized peptide derived from human TNFSF9. AA range:31-80
Specificity :	CD137L Polyclonal Antibody detects endogenous levels of CD137L protein.
Formulation :	Liquid in PBS containing 50% glycerol, 0.5% BSA and 0.02% sodium azide.
Source :	Rabbit
Dilution :	Western Blot: 1/500 - 1/2000. Immunofluorescence: 1/200 - 1/1000. ELISA: 1/20000. Not yet tested in other applications.
Purification :	The antibody was affinity-purified from rabbit antiserum by affinity-chromatography using epitope-specific immunogen.
Concentration :	1 mg/ml
Storage_stability :	-20°C/1 year
Msds :	MSDS_Antibody.pdf
Other_name :	TNFSF9; Tumor necrosis factor ligand superfamily member 9; 4-1BB ligand; 4-1BBL
Molecular Weight :	23KD

Product Images



Western Blot analysis of various cells using CD137L Polyclonal Antibody diluted at 1 : 1000

15--



Western Blot analysis of HuvEc cells using CD137L Polyclonal Antibody diluted at 1 : 1000