



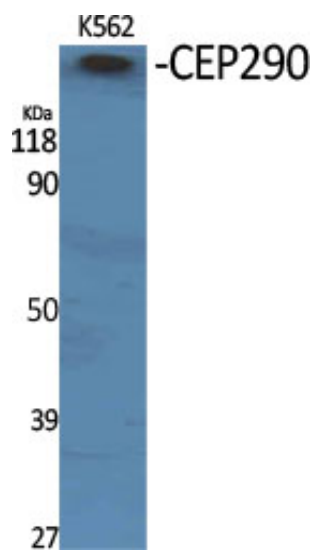
CEP290 Polyclonal Antibody

Catalog_no :	AT0859
Applications :	WB,ELISA
Reactivity :	Human,Mouse
Category :	抗原抗体
Size :	100µg/50µg/20µg
Gene_name :	CEP290
Protein_name :	Centrosomal protein of 290 kDa
Humangene_id :	80184
Humanswissprot_no :	O15078
Mousegene_id :	216274
Mouseswissprot_no :	Q6A078
Immunogen :	The antiserum was produced against synthesized peptide derived from human CEP290. AA range:771-820
Specificity :	CEP290 Polyclonal Antibody detects endogenous levels of CEP290 protein.
Formulation :	Liquid in PBS containing 50% glycerol, 0.5% BSA and 0.02% sodium azide.
Source :	Rabbit
Dilution :	Western Blot: 1/500 - 1/2000. ELISA: 1/20000. Not yet tested in other applications.
Purification :	The antibody was affinity-purified from rabbit antiserum by affinity-chromatography using epitope-specific immunogen.
Concentration :	1 mg/ml
Storage_stability :	-20°C/1 year
Msds :	MSDS_Antibody.pdf
Other_name :	CEP290; BBS14; KIAA0373; NPHP6; Centrosomal protein of 290 kDa; Cep290; Bardet-Biedl syndrome 14 protein; Cancer/testis antigen 87; CT87; Nephrocystin-6; Tumor antigen se2-2
Molecular	290KD



Weight :

Product Images



Western Blot analysis of various cells using CEP290 Polyclonal Antibody