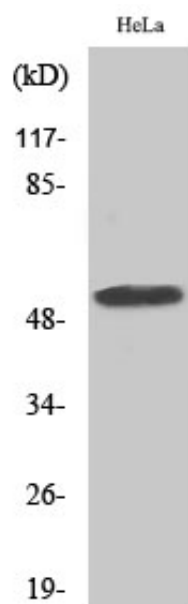


CEP55 Polyclonal Antibody

Catalog_no :	AT0862
Applications :	WB,IHC-p,ELISA
Reactivity :	Human
Category :	抗原抗体
Size :	100µg/50µg/20µg
Gene_name :	CEP55
Protein_name :	Centrosomal protein of 55 kDa
Humangene_id :	55165
Humanswissprot_no :	Q53EZ4
Immunogen :	The antiserum was produced against synthesized peptide derived from human CEP55. AA range:81-130
Specificity :	CEP55 Polyclonal Antibody detects endogenous levels of CEP55 protein.
Formulation :	Liquid in PBS containing 50% glycerol, 0.5% BSA and 0.02% sodium azide.
Source :	Rabbit
Dilution :	Western Blot: 1/500 - 1/2000. Immunohistochemistry: 1/100 - 1/300. ELISA: 1/40000. Not yet tested in other applications.
Purification :	The antibody was affinity-purified from rabbit antiserum by affinity-chromatography using epitope-specific immunogen.
Concentration :	1 mg/ml
Storage_stability :	-20°C/1 year
Msds :	MSDS_Antibody.pdf
Other_name :	CEP55; C10orf3; URCC6; Centrosomal protein of 55 kDa; Cep55; Up-regulated in colon cancer 6
Molecular Weight :	54KD

Product Images



Western Blot analysis of various cells using CEP55 Polyclonal Antibody