

c-Fos Polyclonal Antibody

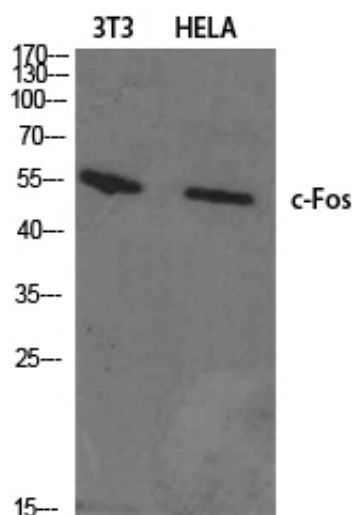
Catalog_no :	AT0884
Applications :	WB,IHC-p,ELISA
Reactivity :	Human,Mouse,Rat
Category :	抗原抗体
Size :	100µg/50µg/20µg
Gene_name :	FOS
Protein_name :	Proto-oncogene c-Fos
Humangene_id :	2353
Humanswissprot_no :	P01100
Mousegene_id :	14281
Mouseswissprot_no :	P01101
Ratgene_id :	140675
Ratswissprot_no :	P12841
Immunogen :	The antiserum was produced against synthesized peptide derived from human Fos. AA range:1-50
Specificity :	c-Fos Polyclonal Antibody detects endogenous levels of c-Fos protein.
Formulation :	Liquid in PBS containing 50% glycerol, 0.5% BSA and 0.02% sodium azide.
Source :	Rabbit
Dilution :	Western Blot: 1/500 - 1/2000. Immunohistochemistry: 1/100 - 1/300. ELISA: 1/10000. Not yet tested in other applications.
Purification :	The antibody was affinity-purified from rabbit antiserum by affinity-chromatography using epitope-specific immunogen.
Concentration :	1 mg/ml
Storage_stability :	-20°C/1 year
Msds :	MSDS_Antibody.pdf



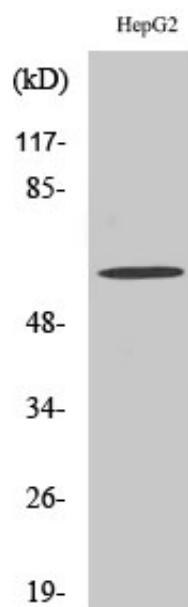
Other_name : FOS; G0S7; Proto-oncogene c-Fos; Cellular oncogene fos; G0/G1 switch regulatory protein 7

Molecular Weight : 62KD

Product Images



Western Blot analysis of various cells using c-Fos Polyclonal Antibody diluted at 1 : 1000 cells nucleus extracted by Minute TM Cytoplasmic and Nuclear Fractionation kit (SC-003, Inventbiotech, MN, USA).



Western Blot analysis of HepG2 cells using c-Fos Polyclonal Antibody diluted at 1 : 1000 cells nucleus extracted by Minute TM Cytoplasmic and Nuclear Fractionation kit (SC-003, Inventbiotech, MN, USA).