



## CHP Polyclonal Antibody

Catalog_no :	<u>AT0914</u>
Applications :	<u>WB,ELISA</u>
Reactivity :	<u>Human,Mouse,Rat</u>
Category :	<u>抗原抗体</u>
Size :	<u>100µg/50µg/20µg</u>
Gene_name :	<u>CHP1</u>
Protein_name :	<u>Calcineurin B homologous protein 1</u>
Humangene_id	<u><a href="#">11261</a></u>
:	<u></u>
Humanswissprot	<u><a href="#">Q99653</a></u>
_no :	<u></u>
Mousegene_id :	<u><a href="#">56398</a></u>
Mouseswissprot	<u><a href="#">P61022</a></u>
_no :	<u></u>
Ratgene_id :	<u><a href="#">64152</a></u>
Ratswissprot_no	<u><a href="#">P61023</a></u>
:	<u></u>
Immunogen :	<u>Synthesized peptide derived from the Internal region of human CHP.</u>
Specificity :	<u>CHP Polyclonal Antibody detects endogenous levels of CHP protein.</u>
Formulation :	<u>Liquid in PBS containing 50% glycerol, 0.5% BSA and 0.02% sodium azide.</u>
Source :	<u>Rabbit</u>
Dilution :	<u>Western Blot: 1/500 - 1/2000. ELISA: 1/20000. Not yet tested in other applications.</u>
Purification :	<u>The antibody was affinity-purified from rabbit antiserum by affinity-chromatography using epitope-specific immunogen.</u>
Concentration :	<u>1 mg/ml</u>
Storage_stability	<u>-20°C/1 year</u>
:	<u></u>
Msds :	<u><a href="#">MSDS_Antibody.pdf</a></u>
Other_name :	<u>CHP1; CHP; Calcineurin B homologous protein 1; Calcineurin B-like protein; Calcium-</u>



binding protein CHP; Calcium-binding protein p22; EF-hand calcium-binding domain-containing protein p22

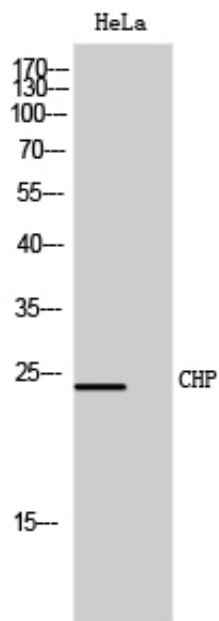
---

Molecular  
Weight :

24KD

---

Product Images



Western Blot analysis of HeLa cells using CHP Polyclonal Antibody