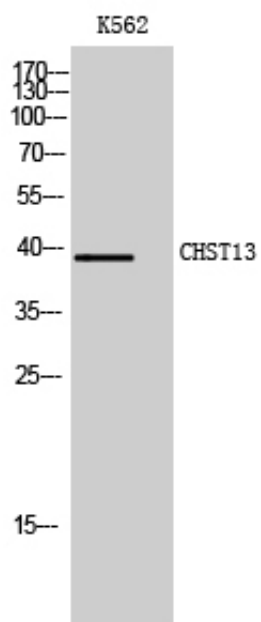


CHST13 Polyclonal Antibody

Catalog_no :	AT0919
Applications :	WB,IHC-p,ELISA
Reactivity :	Human
Category :	抗原抗体
Size :	100µg/50µg/20µg
Gene_name :	CHST13
Protein_name :	Carbohydrate sulfotransferase 13
Humangene_id :	166012
Humanswissprot_no :	Q8NET6
Immunogen :	The antiserum was produced against synthesized peptide derived from human CHST13. AA range:211-260
Specificity :	CHST13 Polyclonal Antibody detects endogenous levels of CHST13 protein.
Formulation :	Liquid in PBS containing 50% glycerol, 0.5% BSA and 0.02% sodium azide.
Source :	Rabbit
Dilution :	Western Blot: 1/500 - 1/2000. Immunohistochemistry: 1/100 - 1/300. ELISA: 1/40000. Not yet tested in other applications.
Purification :	The antibody was affinity-purified from rabbit antiserum by affinity-chromatography using epitope-specific immunogen.
Concentration :	1 mg/ml
Storage_stability :	-20°C/1 year
Msds :	MSDS_Antibody.pdf
Other_name :	CHST13; Carbohydrate sulfotransferase 13; Chondroitin 4-O-sulfotransferase 3; Chondroitin 4-sulfotransferase 3; C4ST-3; C4ST3
Molecular Weight :	39KD

Product Images



Western Blot analysis of K562 cells using CHST13 Polyclonal Antibody