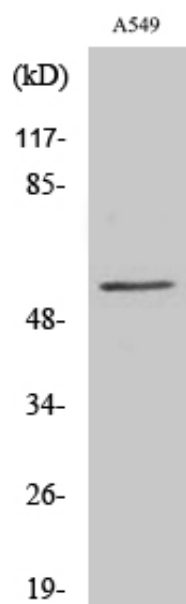


## CHST2 Polyclonal Antibody

|                     |  |
|---------------------|--|
| Catalog_no :        | AT0920   |
| Applications :      | WB,ELISA   |
| Reactivity :        | Human  |
| Category :          | 抗原抗体   |
| Size :              | 100µg/50µg/20µg  |
| Gene_name :         | CHST2  |
| Protein_name :      | Carbohydrate sulfotransferase 2  |
| Humangene_id :      | <a href="#">9435</a>   |
| Humanswissprot_no : | <a href="#">Q9Y4C5</a>   |
| Immunogen :         | The antiserum was produced against synthesized peptide derived from human CHST2. AA range:1-50   |
| Specificity :       | CHST2 Polyclonal Antibody detects endogenous levels of CHST2 protein.  |
| Formulation :       | Liquid in PBS containing 50% glycerol, 0.5% BSA and 0.02% sodium azide.  |
| Source :            | Rabbit   |
| Dilution :          | Western Blot: 1/500 - 1/2000. ELISA: 1/10000. Not yet tested in other applications.  |
| Purification :      | The antibody was affinity-purified from rabbit antiserum by affinity-chromatography using epitope-specific immunogen.  |
| Concentration :     | 1 mg/ml  |
| Storage_stability : | -20°C/1 year   |
| Msds :              | MSDS_Antibody.pdf  |
| Other_name :        | CHST2; GN6ST; Carbohydrate sulfotransferase 2; Galactose/N-acetylglucosamine/N-acetylglucosamine 6-O-sulfotransferase 2; GST-2; N-acetylglucosamine 6-O-sulfotransferase 1; GlcNAc6ST-1; Gn6ST-1 |
| Molecular Weight :  | 58KD   |

## Product Images



Western Blot analysis of various cells using CHST2 Polyclonal Antibody