

## CHSY1 Polyclonal Antibody

Catalog_no :	AT0923
Applications :	WB,IHC-p,ELISA
Reactivity :	Human,Mouse
Category :	抗原抗体
Size :	100µg/50µg/20µg
Gene_name :	CHSY1
Protein_name :	Chondroitin sulfate synthase 1
Humangene_id :	<a href="#">22856</a>
Humanswissprot_no :	<a href="#">Q86X52</a>
Mousegene_id :	<a href="#">269941</a>
Mouseswissprot_no :	<a href="#">Q6ZQ11</a>
Immunogen :	The antiserum was produced against synthesized peptide derived from human CHSY1. AA range:341-390
Specificity :	CHSY1 Polyclonal Antibody detects endogenous levels of CHSY1 protein.
Formulation :	Liquid in PBS containing 50% glycerol, 0.5% BSA and 0.02% sodium azide.
Source :	Rabbit
Dilution :	Western Blot: 1/500 - 1/2000. Immunohistochemistry: 1/100 - 1/300. ELISA: 1/10000. Not yet tested in other applications.
Purification :	The antibody was affinity-purified from rabbit antiserum by affinity-chromatography using epitope-specific immunogen.
Concentration :	1 mg/ml
Storage_stability :	-20°C/1 year
Msds :	MSDS_Antibody.pdf
Other_name :	CHSY1; CHSY; CSS1; KIAA0990; Chondroitin sulfate synthase 1; Chondroitin glucuronyltransferase 1; Chondroitin synthase 1; ChSy-1; Glucuronosyl-N-acetylgalactosaminyl-proteoglycan 4-beta-N-acetylgalactosaminyltransferase 1; N-acetylgalactosa

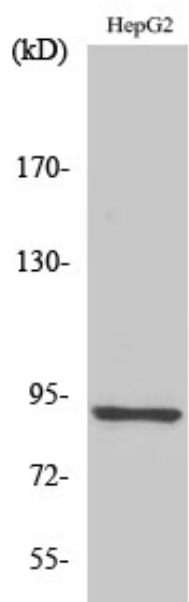


Molecular  
Weight :

91KD

---

## Product Images



Western Blot analysis of various cells using CHSY1 Polyclonal Antibody