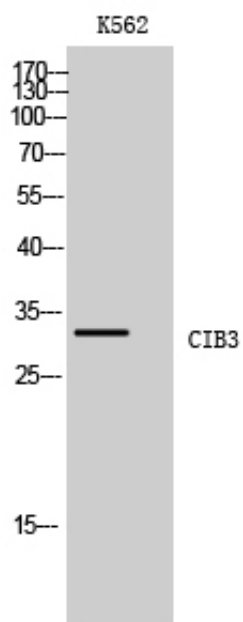




CIB3 Polyclonal Antibody

Catalog_no :	AT0926
Applications :	WB,ELISA
Reactivity :	Human,Mouse
Category :	抗原抗体
Size :	100µg/50µg/20µg
Gene_name :	CIB3
Protein_name :	Calcium and integrin-binding family member 3
Humangene_id :	117286
Humanswissprot_no :	Q96Q77
Immunogen :	The antiserum was produced against synthesized peptide derived from human CIB3. AA range:138-187
Specificity :	CIB3 Polyclonal Antibody detects endogenous levels of CIB3 protein.
Formulation :	Liquid in PBS containing 50% glycerol, 0.5% BSA and 0.02% sodium azide.
Source :	Rabbit
Dilution :	Western Blot: 1/500 - 1/2000. ELISA: 1/20000. Not yet tested in other applications.
Purification :	The antibody was affinity-purified from rabbit antiserum by affinity-chromatography using epitope-specific immunogen.
Concentration :	1 mg/ml
Storage_stability :	-20°C/1 year
Msds :	MSDS_Antibody.pdf
Other_name :	CIB3; KIP3; Calcium and integrin-binding family member 3; Kinase-interacting protein 3; KIP 3
Molecular Weight :	32KD

Product Images



Western Blot analysis of K562 cells using CIB3 Polyclonal Antibody