



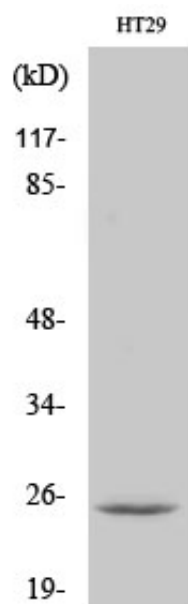
CIDE-B Polyclonal Antibody

Catalog_no :	AT0928
Applications :	WB,IHC-p,IF,ELISA
Reactivity :	Human,Mouse
Category :	抗原抗体
Size :	100µg/50µg/20µg
Gene_name :	CIDEB
Protein_name :	Cell death activator CIDE-B
Humangene_id :	27141
Humanswissprot_no :	Q9UHD4
Mousegene_id :	12684
Mouseswissprot_no :	O70303
Immunogen :	The antiserum was produced against synthesized peptide derived from human CIDEB. AA range:91-140
Specificity :	CIDE-B Polyclonal Antibody detects endogenous levels of CIDE-B protein.
Formulation :	Liquid in PBS containing 50% glycerol, 0.5% BSA and 0.02% sodium azide.
Source :	Rabbit
Dilution :	Western Blot: 1/500 - 1/2000. Immunohistochemistry: 1/100 - 1/300. Immunofluorescence: 1/200 - 1/1000. ELISA: 1/40000. Not yet tested in other applications.
Purification :	The antibody was affinity-purified from rabbit antiserum by affinity-chromatography using epitope-specific immunogen.
Concentration :	1 mg/ml
Storage_stability :	-20°C/1 year
Msds :	MSDS_Antibody.pdf
Other_name :	CIDEB; Cell death activator CIDE-B; Cell death-inducing DFFA-like effector B
Molecular	24KD



Weight :

Product Images



Western Blot analysis of various cells using CIDE-B Polyclonal Antibody