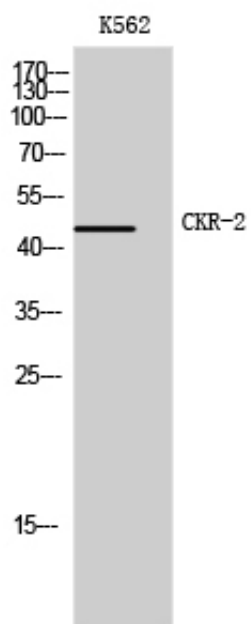




CKR-2 Polyclonal Antibody

Catalog_no :	AT0934
Applications :	WB,IF,ELISA
Reactivity :	Mouse,Rat
Category :	抗原抗体
Size :	100µg/50µg/20µg
Gene_name :	CCR2
Protein_name :	C-C chemokine receptor type 2
Mousegene_id :	12772
Ratgene_id :	60463
Ratswissprot_no :	O55193
Immunogen :	Synthesized peptide derived from CKR-2 . at AA range: 250-330
Specificity :	CKR-2 Polyclonal Antibody detects endogenous levels of CKR-2 protein.
Formulation :	Liquid in PBS containing 50% glycerol, 0.5% BSA and 0.02% sodium azide.
Source :	Rabbit
Dilution :	Western Blot: 1/500 - 1/2000. Immunofluorescence: 1/200 - 1/1000. ELISA: 1/5000. Not yet tested in other applications.
Purification :	The antibody was affinity-purified from rabbit antiserum by affinity-chromatography using epitope-specific immunogen.
Concentration :	1 mg/ml
Storage_stability :	-20°C/1 year
Msds :	MSDS_Antibody.pdf
Other_name :	CCR2; CMKBR2; C-C chemokine receptor type 2; C-C CKR-2; CC-CKR-2; CCR-2; CCR2; Monocyte chemoattractant protein 1 receptor; MCP-1-R; CD antigen CD192
Molecular Weight :	46KD

Product Images



Western Blot analysis of K562 cells using CKR-2 Polyclonal Antibody