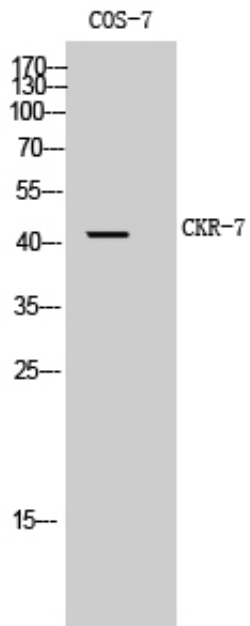




CKR-7 Polyclonal Antibody

Catalog_no :	AT0938
Applications :	WB,IF,ELISA
Reactivity :	Human,Monkey
Category :	抗原抗体
Size :	100µg/50µg/20µg
Gene_name :	CCR7
Protein_name :	C-C chemokine receptor type 7
Humangene_id :	1236
Humanswissprot_no :	P32248
Immunogen :	The antiserum was produced against synthesized peptide derived from human CCR7. AA range:170-219
Specificity :	CKR-7 Polyclonal Antibody detects endogenous levels of CKR-7 protein.
Formulation :	Liquid in PBS containing 50% glycerol, 0.5% BSA and 0.02% sodium azide.
Source :	Rabbit
Dilution :	Western Blot: 1/500 - 1/2000. Immunofluorescence: 1/200 - 1/1000. ELISA: 1/40000. Not yet tested in other applications.
Purification :	The antibody was affinity-purified from rabbit antiserum by affinity-chromatography using epitope-specific immunogen.
Concentration :	1 mg/ml
Storage_stability :	-20°C/1 year
Msds :	MSDS_Antibody.pdf
Other_name :	CCR7; CMKBR7; EBI1; EVI1; C-C chemokine receptor type 7; C-C CKR-7; CC-CKR-7; CCR-7; BLR2; CDw197; Epstein-Barr virus-induced G-protein coupled receptor 1; EBI1; EBV-induced G-protein coupled receptor 1; MIP-3 beta receptor; CD antigen CD19
Molecular Weight :	43KD

Product Images



Western Blot analysis of COS-7 cells using CKR-7 Polyclonal Antibody