



Cks1 Polyclonal Antibody

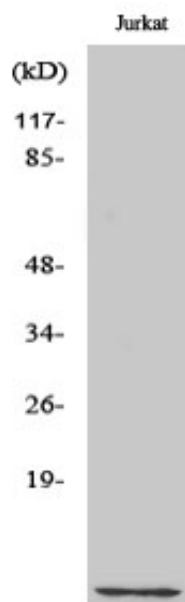
Catalog_no :	<u>AT0939</u>
Applications :	<u>WB,IF,ELISA</u>
Reactivity :	<u>Human,Mouse</u>
Category :	<u>抗原抗体</u>
Size :	<u>100µg/50µg/20µg</u>
Gene_name :	<u>CKS1B</u>
Protein_name :	<u>Cyclin-dependent kinases regulatory subunit 1</u>
Humangene_id	<u>1163</u>
:	<u></u>
Humanswissprot	<u>P61024</u>
_no :	<u></u>
Mousegene_id :	<u>54124</u>
Mouseswissprot	<u>P61025</u>
_no :	<u></u>
Immunogen :	<u>The antiserum was produced against synthesized peptide derived from human CKS1. AA range:10-59</u>
Specificity :	<u>Cks1 Polyclonal Antibody detects endogenous levels of Cks1 protein.</u>
Formulation :	<u>Liquid in PBS containing 50% glycerol, 0.5% BSA and 0.02% sodium azide.</u>
Source :	<u>Rabbit</u>
Dilution :	<u>Western Blot: 1/500 - 1/2000. Immunofluorescence: 1/200 - 1/1000. ELISA: 1/20000. Not yet tested in other applications.</u>
Purification :	<u>The antibody was affinity-purified from rabbit antiserum by affinity-chromatography using epitope-specific immunogen.</u>
Concentration :	<u>1 mg/ml</u>
Storage_stability	<u>-20°C/1 year</u>
:	<u></u>
Msds :	<u>MSDS_Antibody.pdf</u>
Other_name :	<u>CKS1B; CKS1; PNAS-143; PNAS-16; Cyclin-dependent kinases regulatory subunit 1; CKS-1</u>
Molecular Weight :	<u>9KD</u>



专注二抗产品

Biodragon旗下品牌

Product Images



Western Blot analysis of various cells using Cks1 Polyclonal Antibody cells nucleus extracted by Minute TM Cytoplasmic and Nuclear Fractionation kit (SC-003, Invent biotech, MN, USA).