



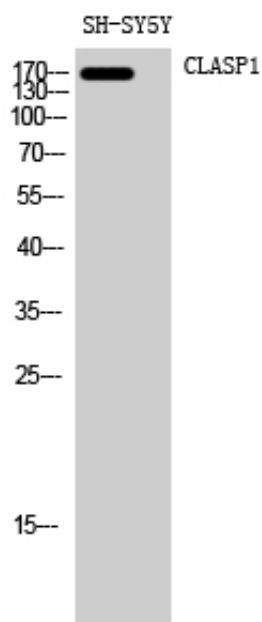
CLASP1 Polyclonal Antibody

Catalog_no :	AT0941
Applications :	WB,IHC-p,ELISA
Reactivity :	Human,Mouse
Category :	抗原抗体
Size :	100µg/50µg/20µg
Gene_name :	CLASP1
Protein_name :	CLIP-associating protein 1
Humangene_id :	23332
Humanswissprot_no :	Q7Z460
Mousegene_id :	76707
Mouseswissprot_no :	Q80TV8
Immunogen :	The antiserum was produced against synthesized peptide derived from human CLASP1. AA range:1171-1220
Specificity :	CLASP1 Polyclonal Antibody detects endogenous levels of CLASP1 protein.
Formulation :	Liquid in PBS containing 50% glycerol, 0.5% BSA and 0.02% sodium azide.
Source :	Rabbit
Dilution :	Western Blot: 1/500 - 1/2000. Immunohistochemistry: 1/100 - 1/300. ELISA: 1/40000. Not yet tested in other applications.
Purification :	The antibody was affinity-purified from rabbit antiserum by affinity-chromatography using epitope-specific immunogen.
Concentration :	1 mg/ml
Storage_stability :	-20°C/1 year
Msds :	MSDS_Antibody.pdf
Other_name :	CLASP1; KIAA0622; MAST1; CLIP-associating protein 1; Cytoplasmic linker-associated protein 1; Multiple asters homolog 1; Protein Orbit homolog 1; hOrbit1
Molecular	169KD



Weight :

Product Images



Western Blot analysis of SH-SY5Y cells using CLASP1 Polyclonal Antibody diluted at 1 : 2000