

## Claudin-4 Polyclonal Antibody

Catalog_no :	AT0951
Applications :	WB,IHC-p,IF,ELISA
Reactivity :	Human,Mouse,Rat
Category :	抗原抗体
Size :	100µg/50µg/20µg
Gene_name :	CLDN4
Protein_name :	Claudin-4
Humangene_id :	<a href="#">1364</a>
Humanswissprot_no :	<a href="#">O14493</a>
Mousegene_id :	<a href="#">12740</a>
Mouseswissprot_no :	<a href="#">O35054</a>
Immunogen :	The antiserum was produced against synthesized peptide derived from human Claudin 4. AA range:160-209
Specificity :	Claudin-4 Polyclonal Antibody detects endogenous levels of Claudin-4 protein.
Formulation :	Liquid in PBS containing 50% glycerol, 0.5% BSA and 0.02% sodium azide.
Source :	Rabbit
Dilution :	Western Blot: 1/500 - 1/2000. Immunohistochemistry: 1/100 - 1/300. Immunofluorescence: 1/200 - 1/1000. ELISA: 1/5000. Not yet tested in other applications.
Purification :	The antibody was affinity-purified from rabbit antiserum by affinity-chromatography using epitope-specific immunogen.
Concentration :	1 mg/ml
Storage_stability :	-20°C/1 year
Msds :	MSDS_Antibody.pdf
Other_name :	CLDN4; CPER; CPETR1; WBSCR8; Claudin-4; Clostridium perfringens enterotoxin receptor; CPE-R; CPE-receptor; Williams-Beuren syndrome chromosomal region 8 protein

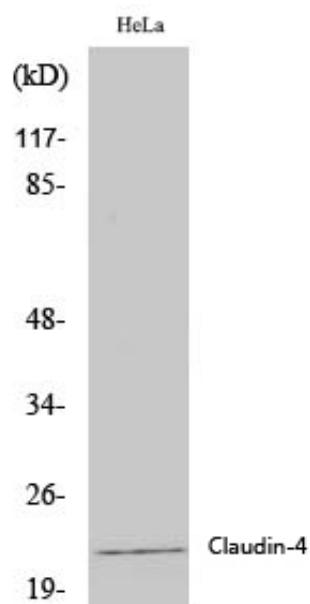


Molecular  
Weight :

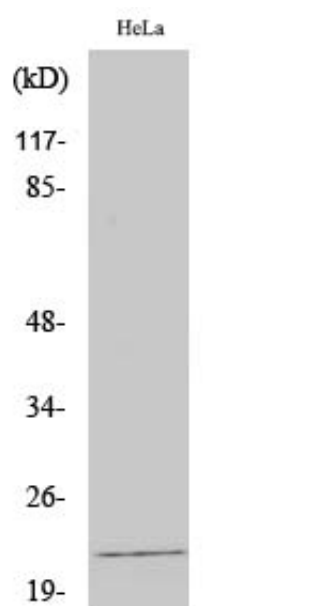
22KD

---

## Product Images



Western Blot analysis of various cells using Claudin-4 Polyclonal Antibody diluted at 1 : 2000



Western Blot analysis of HeLa cells using Claudin-4 Polyclonal Antibody diluted at 1 : 2000