

## CLC-4 Polyclonal Antibody

Catalog_no :	AT0959
Applications :	WB,IF,ELISA
Reactivity :	Human,Mouse,Rat
Category :	抗原抗体
Size :	100µg/50µg/20µg
Gene_name :	CLCN4
Protein_name :	H(+)/Cl(-) exchange transporter 4
Humangene_id	<a href="#">1183</a>
:	
Humanswissprot	<a href="#">P51793</a>
_no :	
Mousegene_id :	<a href="#">12727</a>
Mouseswissprot	<a href="#">Q61418</a>
_no :	
Ratswissprot_no	<a href="#">P51794</a>
:	
Immunogen :	The antiserum was produced against synthesized peptide derived from human CLCN4. AA range:221-270
Specificity :	CLC-4 Polyclonal Antibody detects endogenous levels of CLC-4 protein.
Formulation :	Liquid in PBS containing 50% glycerol, 0.5% BSA and 0.02% sodium azide.
Source :	Rabbit
Dilution :	Western Blot: 1/500 - 1/2000. Immunofluorescence: 1/200 - 1/1000. ELISA: 1/40000. Not yet tested in other applications.
Purification :	The antibody was affinity-purified from rabbit antiserum by affinity-chromatography using epitope-specific immunogen.
Concentration :	1 mg/ml
Storage_stability	-20°C/1 year
:	
Msds :	MSDS_Antibody.pdf
Other_name :	CLCN4; H(+)/Cl(-) exchange transporter 4; Chloride channel protein 4; ClC-4; Chloride



transporter CIC-4

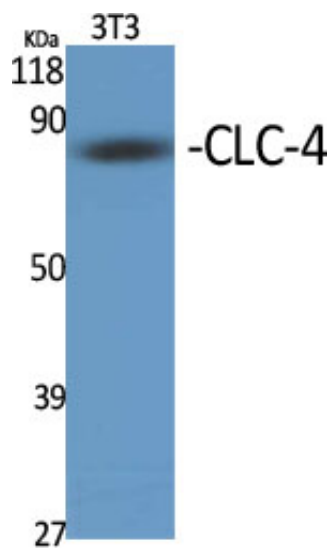
---

Molecular  
Weight :

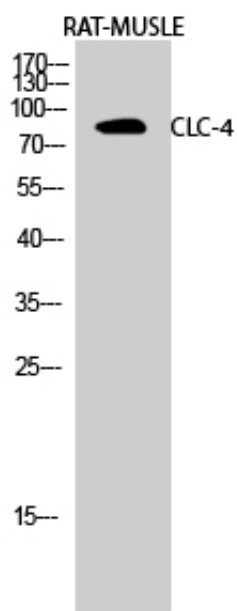
85KD

---

## Product Images



Western Blot analysis of various cells using CLC-4 Polyclonal Antibody diluted at 1 : 500



Western Blot analysis of RAT-MUSCLE cells using CLC-4 Polyclonal Antibody diluted at 1 : 500