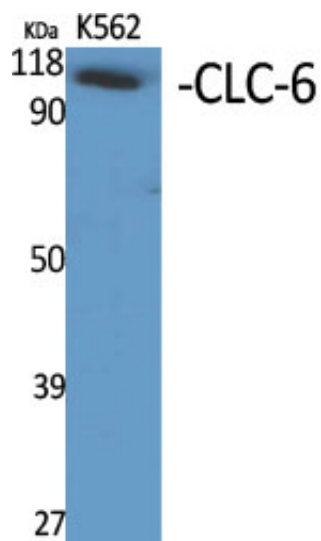




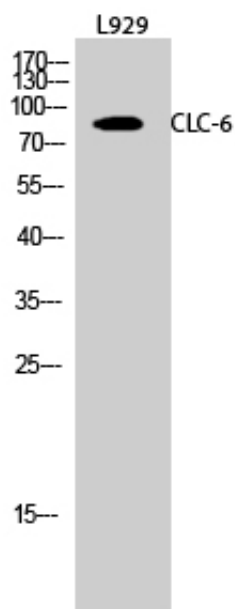
CLC-6 Polyclonal Antibody

Catalog_no :	<u>AT0960</u>
Applications :	<u>WB,ELISA</u>
Reactivity :	<u>Human,Mouse,Rat,Monkey</u>
Category :	<u>抗原抗体</u>
Size :	<u>100µg/50µg/20µg</u>
Gene_name :	<u>CLCN6</u>
Protein_name :	<u>Chloride transport protein 6</u>
Humangene_id :	<u>1185</u>
Humanswissprot_no :	<u>P51797</u>
Mousegene_id :	<u>26372</u>
Mouseswissprot_no :	<u>O35454</u>
Immunogen :	<u>The antiserum was produced against synthesized peptide derived from human CLCN6. AA range:611-660</u>
Specificity :	<u>CLC-6 Polyclonal Antibody detects endogenous levels of CLC-6 protein.</u>
Formulation :	<u>Liquid in PBS containing 50% glycerol, 0.5% BSA and 0.02% sodium azide.</u>
Source :	<u>Rabbit</u>
Dilution :	<u>Western Blot: 1/500 - 1/2000. ELISA: 1/40000. Not yet tested in other applications.</u>
Purification :	<u>The antibody was affinity-purified from rabbit antiserum by affinity-chromatography using epitope-specific immunogen.</u>
Concentration :	<u>1 mg/ml</u>
Storage_stability :	<u>-20°C/1 year</u>
Msds :	<u>MSDS_Antibody.pdf</u>
Other_name :	<u>CLCN6; KIAA0046; Chloride transport protein 6; Chloride channel protein 6; CLC-6</u>
Molecular Weight :	<u>97KD</u>

Product Images



Western Blot analysis of various cells using CLC-6 Polyclonal Antibody diluted at 1 : 500



Western Blot analysis of L929 cells using CLC-6 Polyclonal Antibody diluted at 1 : 500