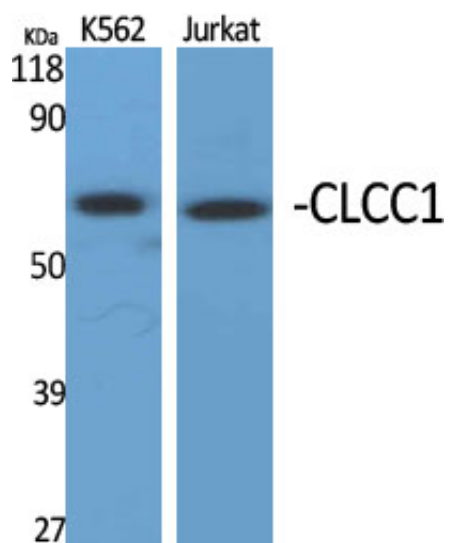


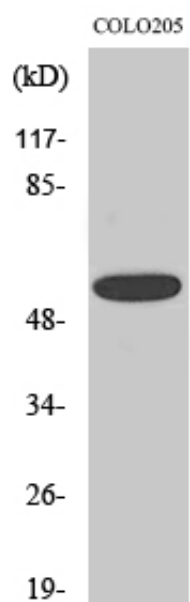
CLCC1 Polyclonal Antibody

Catalog_no :	AT0962
Applications :	WB,IF,ELISA
Reactivity :	Human
Category :	抗原抗体
Size :	100µg/50µg/20µg
Gene_name :	CLCC1
Protein_name :	Chloride channel CLIC-like protein 1
Humangene_id :	23155
Humanswissprot_no :	Q96S66
Immunogen :	The antiserum was produced against synthesized peptide derived from human CLCC1. AA range:391-440
Specificity :	CLCC1 Polyclonal Antibody detects endogenous levels of CLCC1 protein.
Formulation :	Liquid in PBS containing 50% glycerol, 0.5% BSA and 0.02% sodium azide.
Source :	Rabbit
Dilution :	Western Blot: 1/500 - 1/2000. Immunofluorescence: 1/200 - 1/1000. ELISA: 1/40000. Not yet tested in other applications.
Purification :	The antibody was affinity-purified from rabbit antiserum by affinity-chromatography using epitope-specific immunogen.
Concentration :	1 mg/ml
Storage_stability :	-20°C/1 year
Msds :	MSDS_Antibody.pdf
Other_name :	CLCC1; KIAA0761; MCLC; Chloride channel CLIC-like protein 1; Mid-1-related chloride channel protein 1
Molecular Weight :	62KD

Product Images



Western Blot analysis of various cells using CLCC1 Polyclonal Antibody diluted at 1 : 1000



Western Blot analysis of HepG2 cells using CLCC1 Polyclonal Antibody diluted at 1 : 1000