

CLIP-115 Polyclonal Antibody

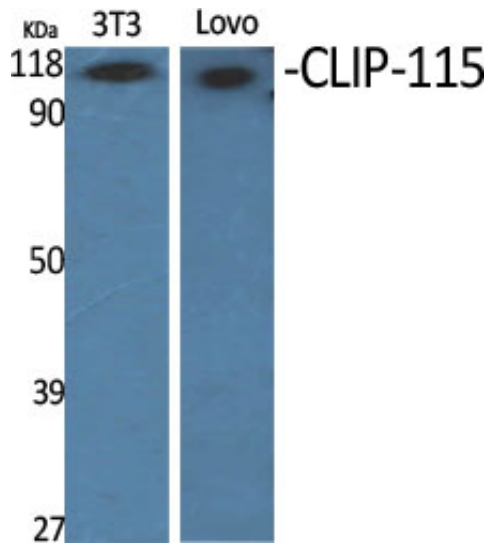
Catalog_no :	AT0967
Applications :	WB,ELISA
Reactivity :	Human,Mouse,Rat
Category :	抗原抗体
Size :	100µg/50µg/20µg
Gene_name :	CLIP2
Protein_name :	CAP-Gly domain-containing linker protein 2
Humangene_id :	7461
Humanswissprot_no :	Q9UDT6
Mousegene_id :	269713
Mouseswissprot_no :	Q9Z0H8
Ratgene_id :	29264
Ratswissprot_no :	O55156
Immunogen :	The antiserum was produced against synthesized peptide derived from human CLIP2. AA range:997-1046
Specificity :	CLIP-115 Polyclonal Antibody detects endogenous levels of CLIP-115 protein.
Formulation :	Liquid in PBS containing 50% glycerol, 0.5% BSA and 0.02% sodium azide.
Source :	Rabbit
Dilution :	Western Blot: 1/500 - 1/2000. ELISA: 1/5000. Not yet tested in other applications.
Purification :	The antibody was affinity-purified from rabbit antiserum by affinity-chromatography using epitope-specific immunogen.
Concentration :	1 mg/ml
Storage_stability :	-20°C/1 year
Msds :	MSDS_Antibody.pdf



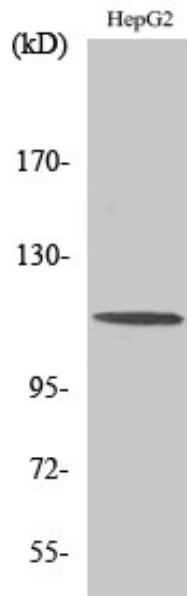
Other_name : CLIP2; CYLN2; KIAA0291; WBSCR3; WBSCR4; WSCR4; CAP-Gly domain-containing linker protein 2; Cytoplasmic linker protein 115; CLIP-115; Cytoplasmic linker protein 2; Williams-Beuren syndrome chromosomal region 3 protein; Williams-Beuren syndro

Molecular Weight : 120KD

Product Images



Western Blot analysis of various cells using CLIP-115 Polyclonal Antibody



Western Blot analysis of A549 cells using CLIP-115 Polyclonal Antibody